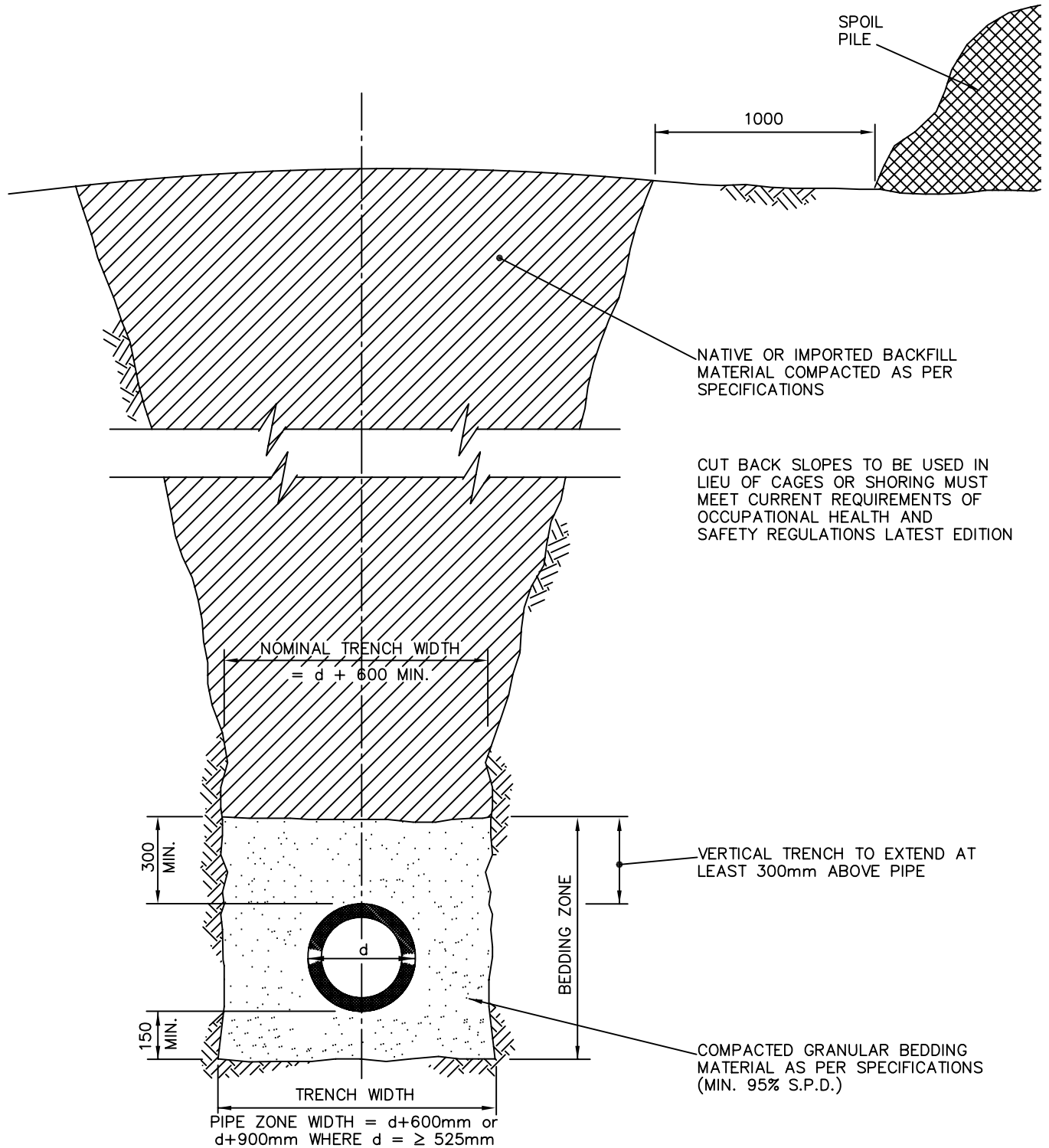


NOTE: THE REQUIRED BEARING AREA SHALL BE DETERMINED BY THE CONTRACTOR TO SUIT THE SOIL CONDITIONS.

NOTE:

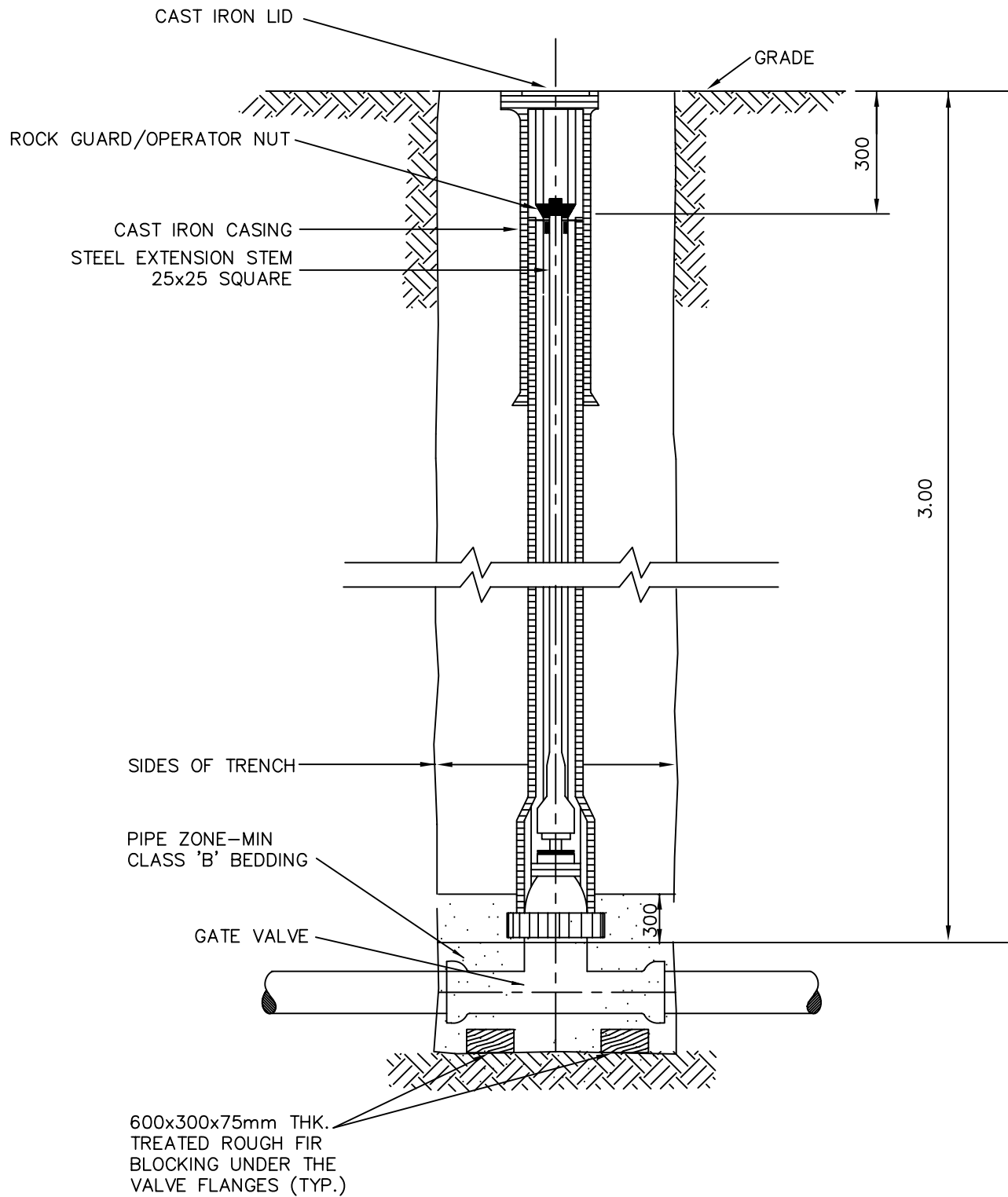
1. ALL DIMENSIONS ARE GIVEN IN MILLIMETRES
2. ALL WOOD PRODUCTS TO BE TREATED
3. ALL FITTINGS TO BE WRAPPED IN POLY PRIOR TO POURING CONCRETE
4. ALL CONCRETE TO BE MIN. 25MPa @ 28 DAYS.

			CITY OF COLD LAKE		
			PUBLIC WORKS AND INFRASTRUCTURE DEPARTMENT		
			DATE:	ACAD - CIVIL DRAFTING STANDARD DETAILS	APPROVED BY:
			JAN. 2003		
			SCALE:		
			N.T.S.	THRUST BLOCK DETAILS	DRAWING NO.
1	JAN 31, 2007	REVISED DRAWING NUMBER			
NO.	DATE	REVISION			
					1.01

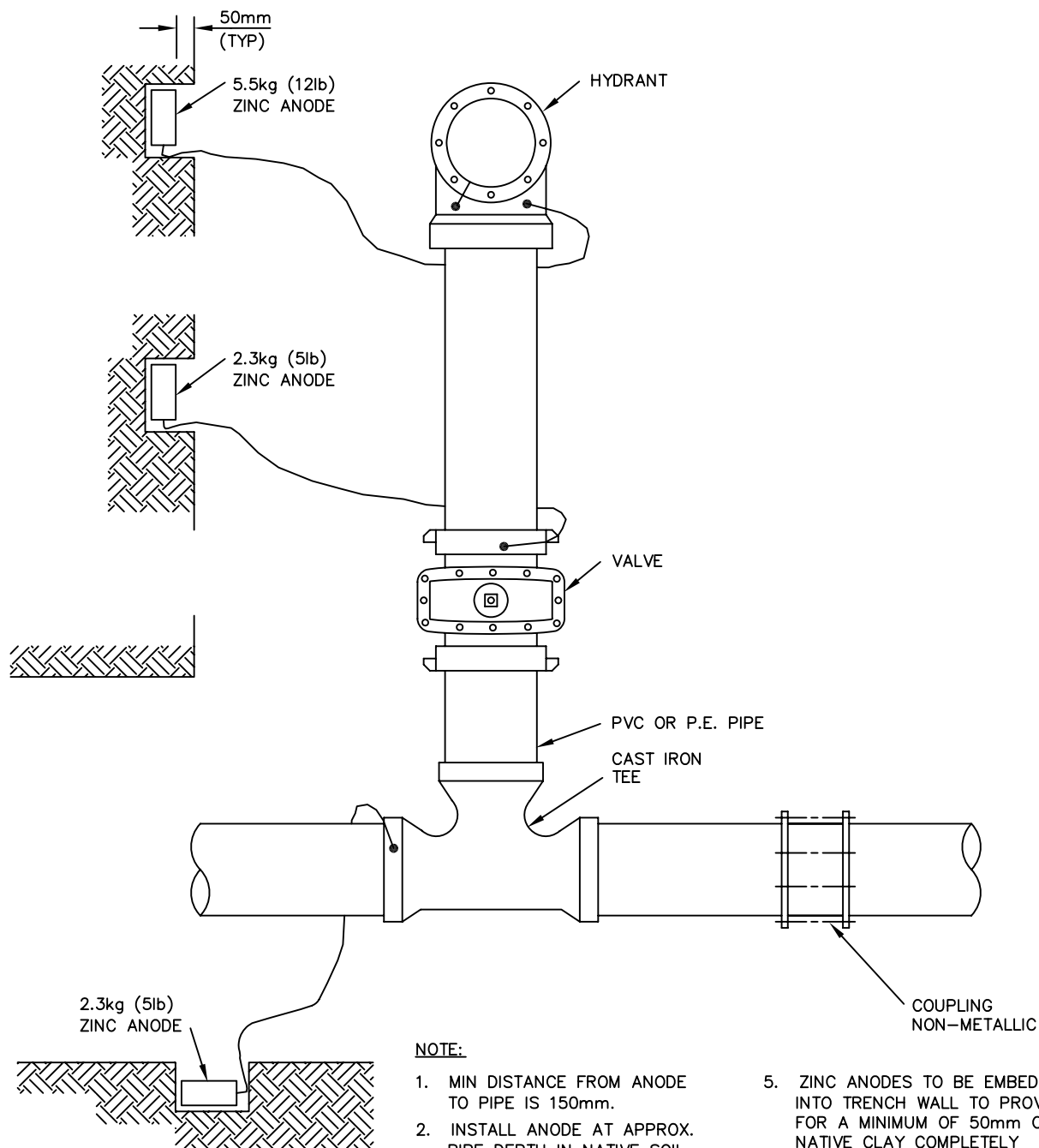


- NOTES: 1. ALL DIMENSIONS ARE IN MILLIMETRES UNLESS SHOWN OTHERWISE.  
2.  $d$  = PIPE OUTSIDE DIAMETER

			CITY OF COLD LAKE		
			PUBLIC WORKS AND INFRASTRUCTURE DEPARTMENT		
			DATE:	ACAD - CIVIL DRAFTING	APPROVED BY:
			JAN. 2003	STANDARD DETAILS	
			SCALE:	TRENCH & CLASS "B"	DRAWING NO.
			N.T.S.	BEDDING DETAIL	1.02
1	JAN 31, 2007	DRAWING NUMBER			
NO.	DATE	REVISION			



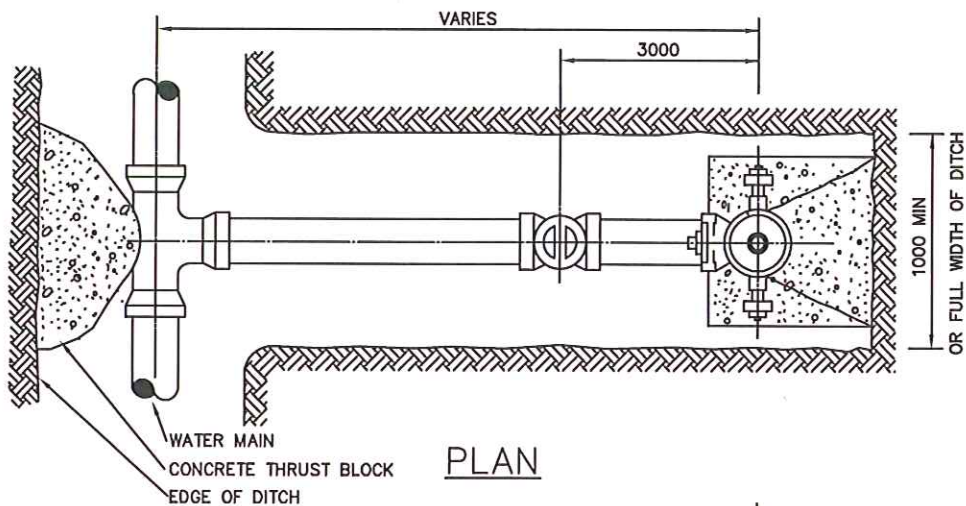
			CITY OF COLD LAKE		
			PUBLIC WORKS AND INFRASTRUCTURE DEPARTMENT		
			DATE:	ACAD - CIVIL DRAFTING STANDARD DETAILS	APPROVED BY:
			JAN. 2003		
			SCALE:	VALVE BOX DETAIL	DRAWING NO.
			N.T.S.		1.03
1	JAN 31, 2007	DRAWING NUMBER			
NO.	DATE	REVISION			



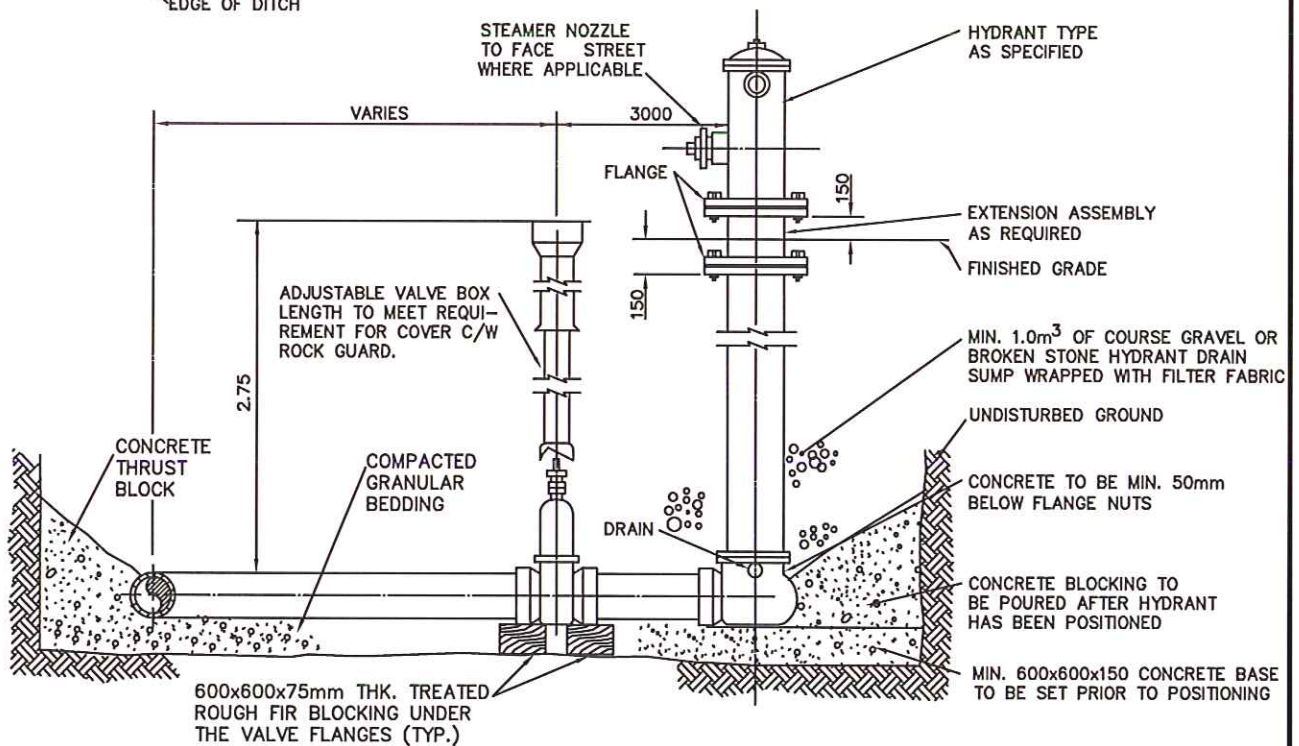
**NOTE:**

1. MIN DISTANCE FROM ANODE TO PIPE IS 150mm.
2. INSTALL ANODE AT APPROX. PIPE DEPTH IN NATIVE SOIL.
3. ALL ZINC ANODES ON FITTINGS AND VALVES ARE 2.3 kg (5lb).
4. ALL ZINC ANODES ON HYDRANTS ARE 5.5 kg (12lb).
5. ZINC ANODES TO BE EMBEDDED INTO TRENCH WALL TO PROVIDE FOR A MINIMUM OF 50mm OF NATIVE CLAY COMPLETELY SURROUNDING THE ANODE.
6. ANODES TO BE AT LEAST 300mm CLEAR OF THRUST BLOCK.

			CITY OF COLD LAKE		
			PUBLIC WORKS AND INFRASTRUCTURE DEPARTMENT		
			DATE:	ACAD - CIVIL DRAFTING STANDARD DETAILS	APPROVED BY:
			JAN. 2003		
			SCALE:		
			N.T.S.	ANODE INSTALLATION AT VALVES, IRON FITTINGS AND HYDRANTS	DRAWING NO.
1	JAN 31, 2007	DRAWING NUMBER			1.04
NO.	DATE	REVISION			



**PLAN**

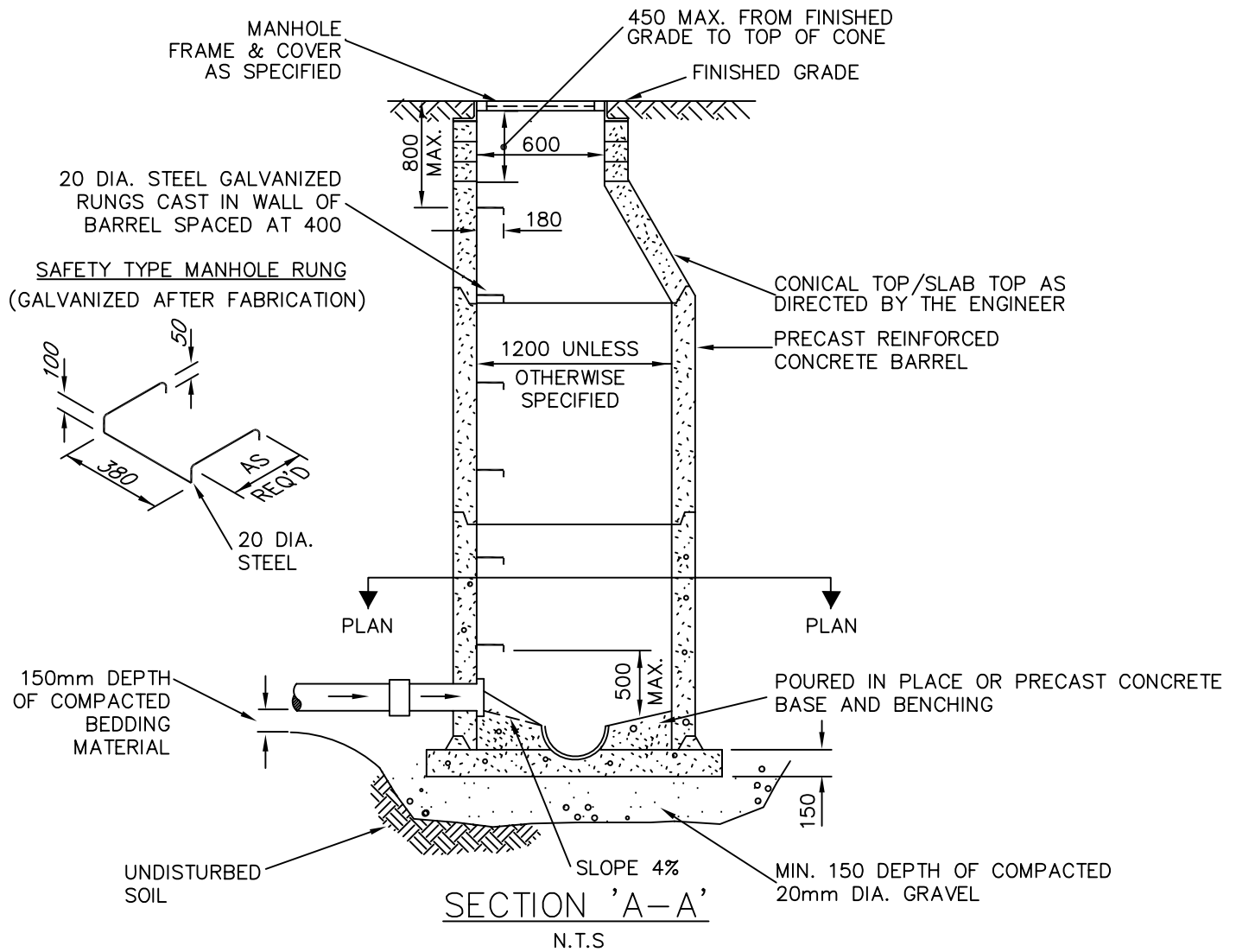


**ELEVATION**

**NOTES:**

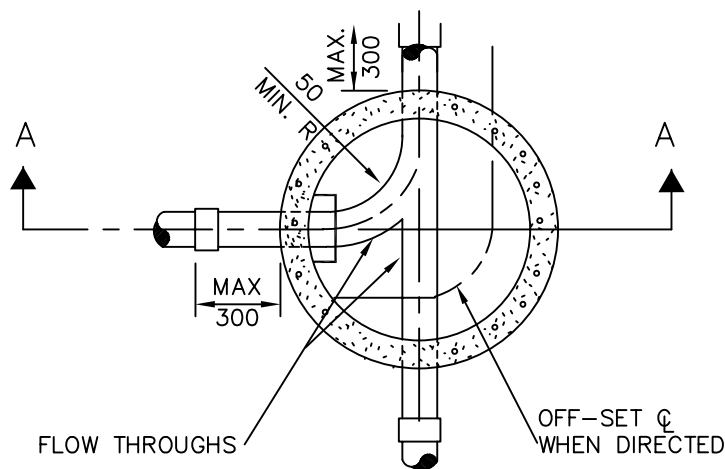
1. ALL DIMENSIONS ARE IN MILLIMETRES.
2. ALL FITTINGS TO BE WRAPPED IN POLY PRIOR TO POURING CONCRETE.
3. CONCRETE TO BE 25 MPa @ 28 DAYS.
4. HYDRANTS SHALL BE COMPRESSION TYPE CONFORMING TO AWWA C502 COMPLETE WITH UNPLUGGED DRAINS, STAINLESS STEEL BOLTS AND ASPHALTIC COATED BURRIED HYDRANT COMPONENTS.
5. PLUG HYDRANT DRAIN HOLES IF GROUND WATER LEVEL IS HIGHER THAN HYDRANT BOTTOM FLANGE. MARK HYDRANT BARREL WITH THE WORDS "NO DRAIN" PAINTED IN WHITE LETTERS 50mm HIGH.

			CITY OF COLD LAKE		
			PUBLIC WORKS AND INFRASTRUCTURE DEPARTMENT		
			DATE:	ACAD - CIVIL DRAFTING	APPROVED BY:
			JAN. 2003	STANDARD DETAILS	
			SCALE:	OFF-LINE HYDRANT DETAIL	DRAWING NO.
			N.T.S.		1.05
2	MAY 9, 2016	VALVE IN CARRIAGE WAY			
1	JAN 31, 2007	DRAWING NUMBER			
NO.	DATE	REVISION			

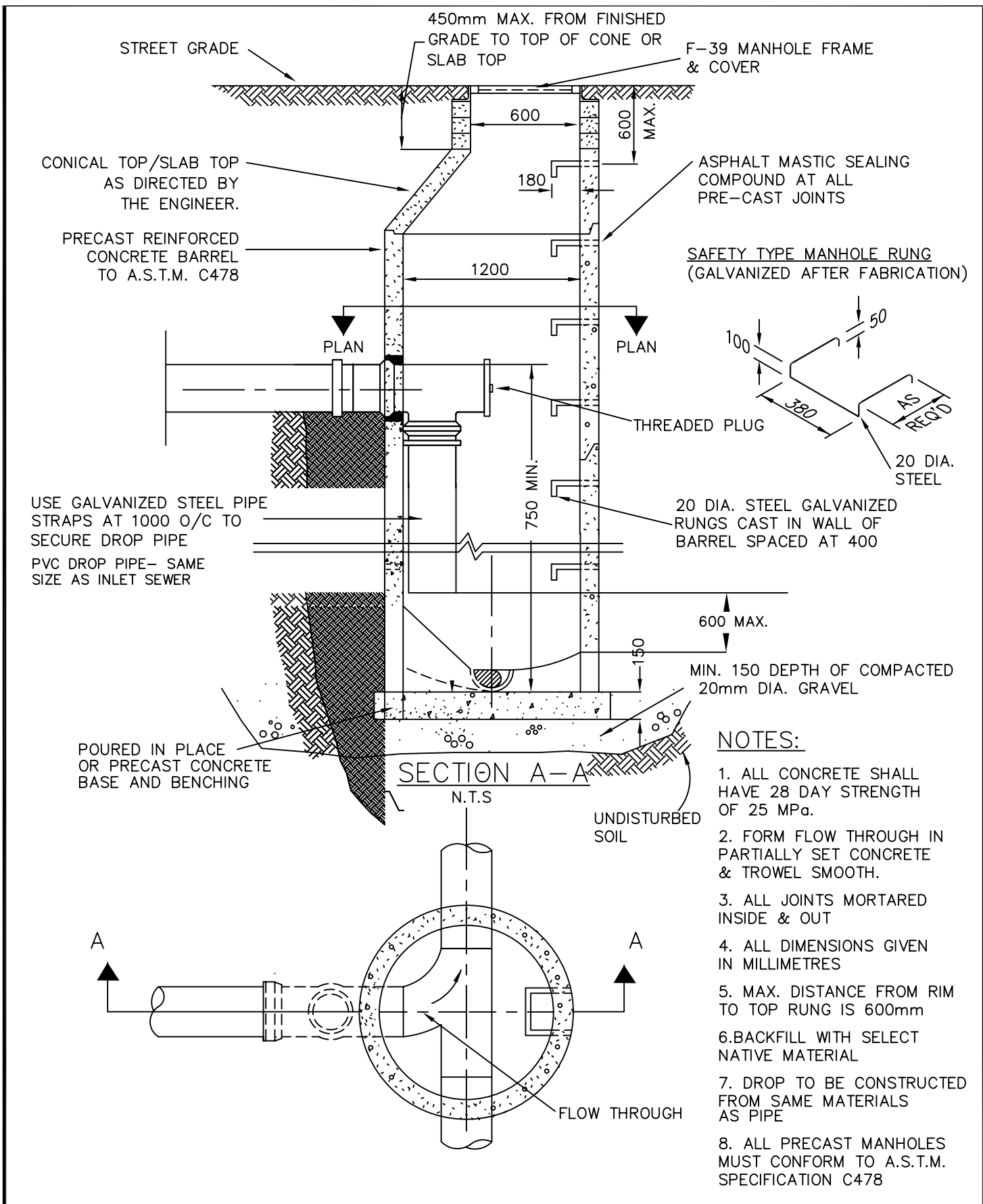


### NOTES:

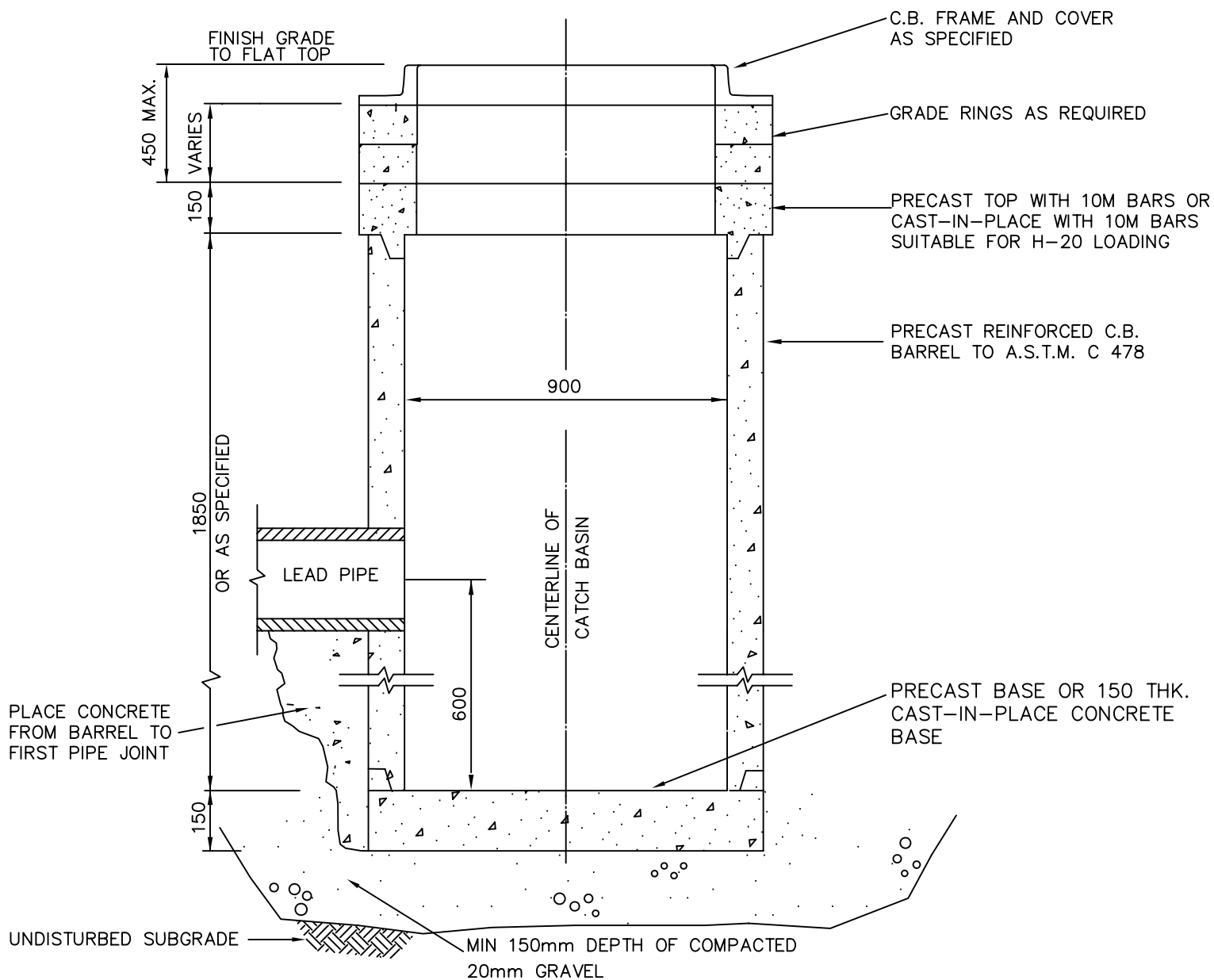
1. ALL PRECAST MANHOLES MUST CONFORM TO A.S.T.M. SPECIFICATIONS C478
2. POURED IN PLACE CONCRETE SHALL HAVE 28 DAYS COMPRESSIVE STRENGTH 25 MPa.
3. ALL JOINTS MORTARED INSIDE & OUT
4. FORM FLOW THROUGH IN PARTIALLY SET CONCRETE AND TROWEL SMOOTH
5. ALL DIMENSIONS GIVEN IN MILLIMETRES.
6. MAX. DIST FROM RIM TO TOP RUNG IS 800mm.
7. BACKFILL MH. WITH SELECT NATIVE MATERIAL.



			CITY OF COLD LAKE		
			PUBLIC WORKS AND INFRASTRUCTURE DEPARTMENT		
			DATE:	ACAD - CIVIL DRAFTING	APPROVED BY:
			JAN. 2003	STANDARD DETAILS	
			SCALE:	MANHOLE DETAIL	DRAWING NO.
			N.T.S.		2.01
1	JAN 31, 2007	DRAWING NUMBER			
NO.	DATE	REVISION			



			CITY OF COLD LAKE			
			PUBLIC WORKS AND INFRASTRUCTURE DEPARTMENT			
			DATE:	ACAD - CIVIL DRAFTING STANDARD DETAILS	APPROVED BY:	
			JAN. 2003			
			SCALE:	DROP MANHOLE DETAIL	DRAWING NO.	
			N.T.S.		2.02	
1	JAN 31, 2007	DRAWING NUMBER				
NO.	DATE	REVISION				

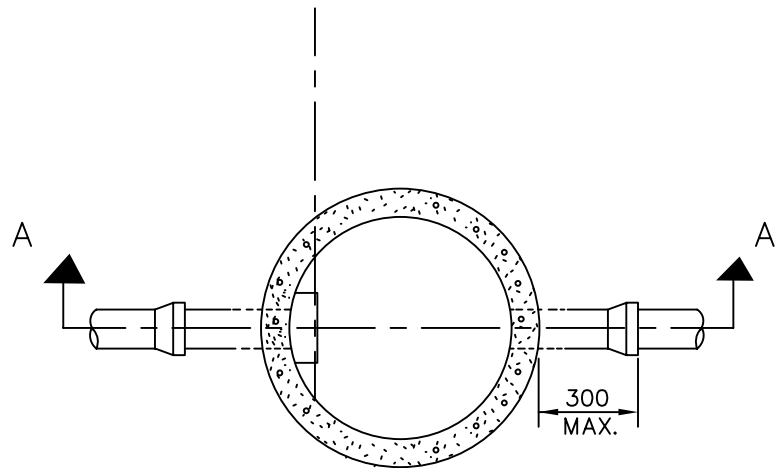
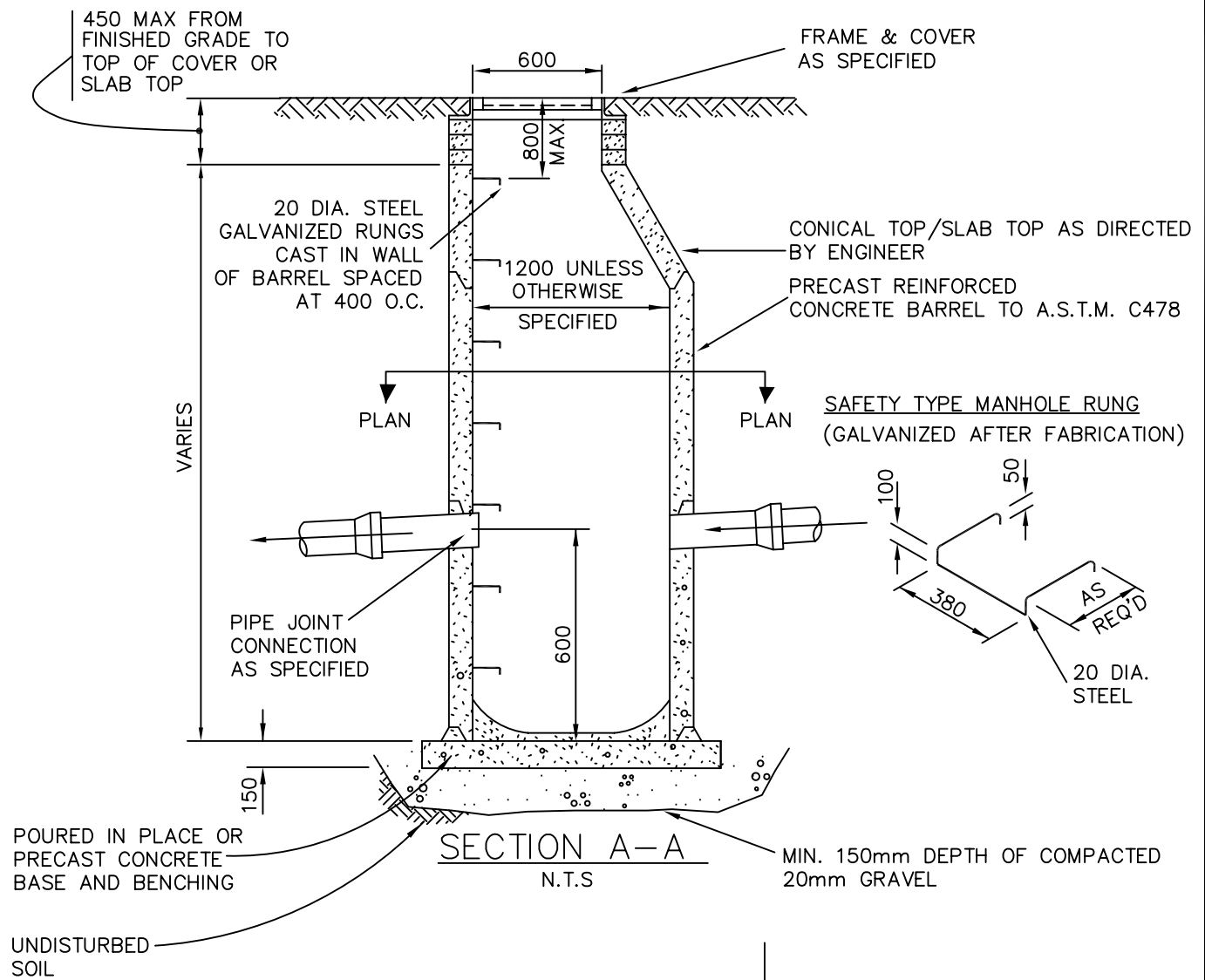


### NOTES:

1. ALL CAST-IN-PLACE CONCRETE 25 MPa – 28 DAY STRENGTH  
ALL JOINTS TO BE MORTARED INSIDE & OUT
2. ALL DIMENSIONS ARE GIVEN IN MILLIMETRES

			CITY OF COLD LAKE PUBLIC WORKS AND INFRASTRUCTURE DEPARTMENT		
			DATE:	ACAD - CIVIL DRAFTING STANDARD DETAILS	APPROVED BY:
			JAN. 2003		
			SCALE:	STANDARD CATCH BASIN WITH SUMP	DRAWING NO.
			N.T.S.		3.01
1	JAN 31, 2007	DRAWING NUMBER			
NO.	DATE	REVISION			



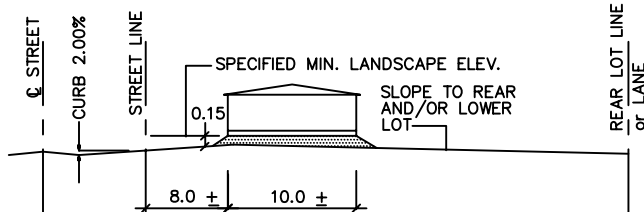
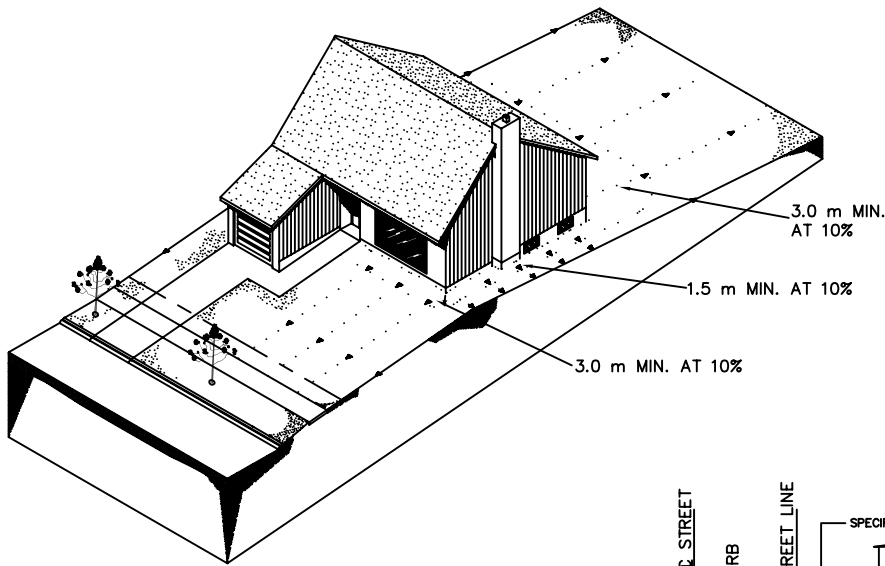


**NOTES:**

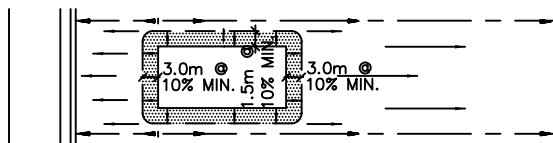
1. ALL PRECAST MANHOLES MUST CONFORM TO A.S.T.M. C478
2. POURED IN PLACE CONCRETE SHALL HAVE 28 DAYS COMPRESSIVE STRENGTH 25 MPa
3. ALL DIMENSIONS ARE IN MILLIMETRES.
4. MAX. DISTANCE FROM RIM TO TOP RUNG IS 800mm.
5. ALL PRECAST MANHOLES MUST CONFORM TO A.S.T.M. SPECIFICATIONS
6. ALL JOINTS MORTARED INSIDE AND OUT
7. ALL JOINTS MORTARED INSIDE AND OUT
8. BACKFILL MANHOLE WITH SELECT NATIVE MATERIAL

			CITY OF COLD LAKE		
			PUBLIC WORKS AND INFRASTRUCTURE DEPARTMENT		
			DATE:	ACAD - CIVIL DRAFTING	APPROVED BY:
			JAN. 2003	STANDARD DETAILS	
			SCALE:	CATCH BASIN MANHOLE	DRAWING NO.
			N.T.S.		3.02
1	JAN 31, 2007	DRAWING NUMBER			
NO.	DATE	REVISION			

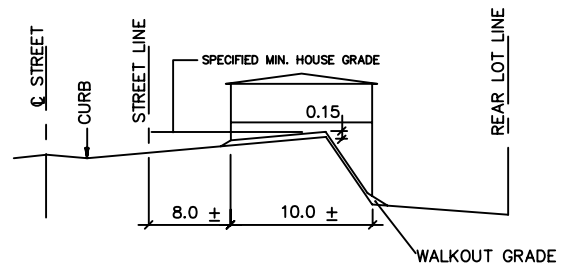
			CITY OF COLD LAKE PUBLIC WORKS AND INFRASTRUCTURE DEPARTMENT		
			DATE:	ACAD - CIVIL DRAFTING STANDARD DETAILS	APPROVED BY:
			JAN. 2003		
			SCALE:	TYPICAL FRONT LOT DRAINAGE TYPE A	DRAWING NO.
1	JAN 31, 2007	DRAWING NUMBER	N.T.S.		3.03
NO.	DATE	REVISION			



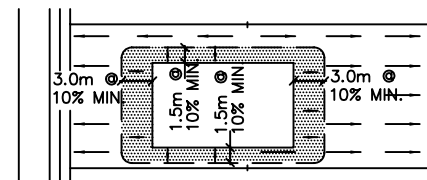
ELEVATION



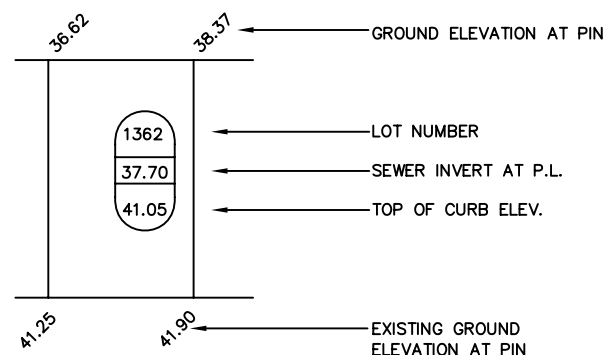
PLAN  
CONVENTIONAL HOUSE TYPE



ELEVATION



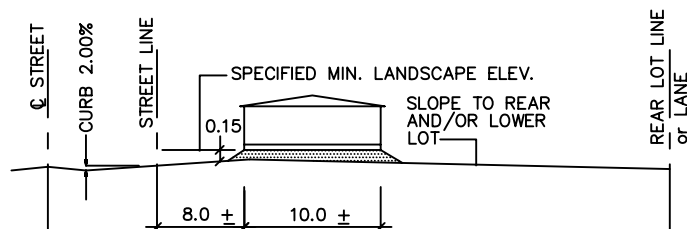
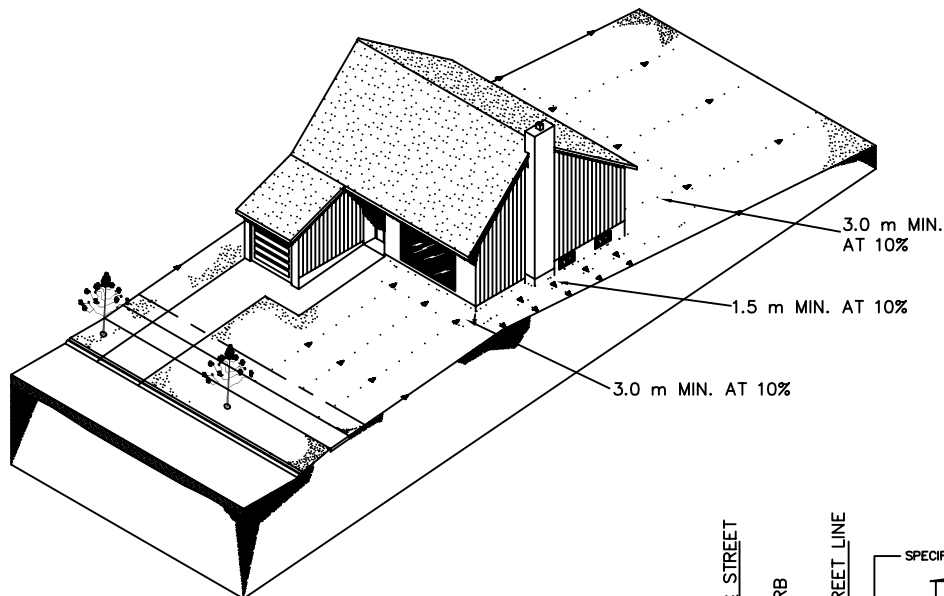
PLAN  
WALKOUT OR BACKSPLIT HOUSE TYPE



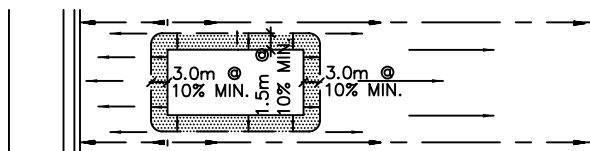
**NOTE:**

1. FINISH LANDSCAPE ELEVATION ADJACENT TO HOUSE TO BE 0.15m ABOVE EXISTING GROUND
2. ALL DIMENSIONS IN METRES UNLESS NOTED OTHERWISE.

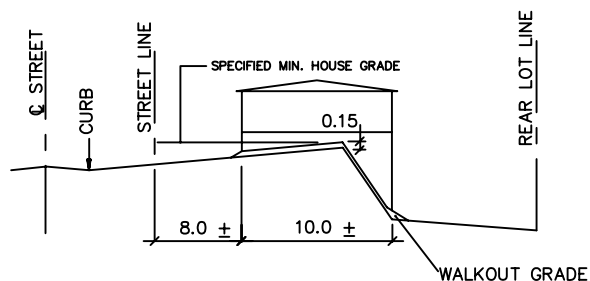
			CITY OF COLD LAKE PUBLIC WORKS AND INFRASTRUCTURE DEPARTMENT		
			DATE:	ACAD - CIVIL DRAFTING STANDARD DETAILS	APPROVED BY:
			JAN. 2003		
			SCALE:	TYPICAL SPLIT LOT DRAINAGE TYPE B	DRAWING NO.
			N.T.S.		3.04
1	JAN 31, 2007	DRAWING NUMBER			
NO.	DATE	REVISION			



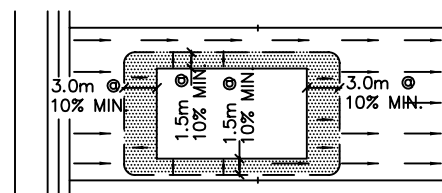
ELEVATION



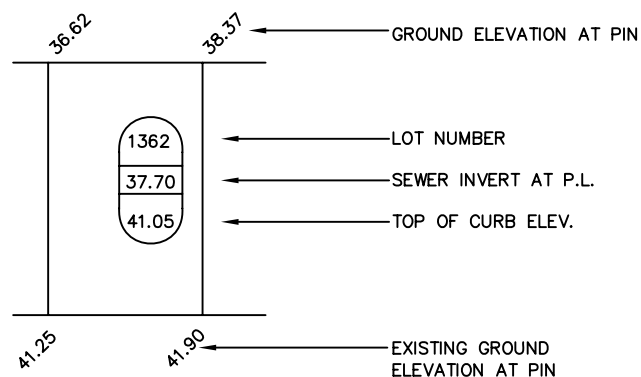
PLAN  
CONVENTIONAL HOUSE TYPE



ELEVATION



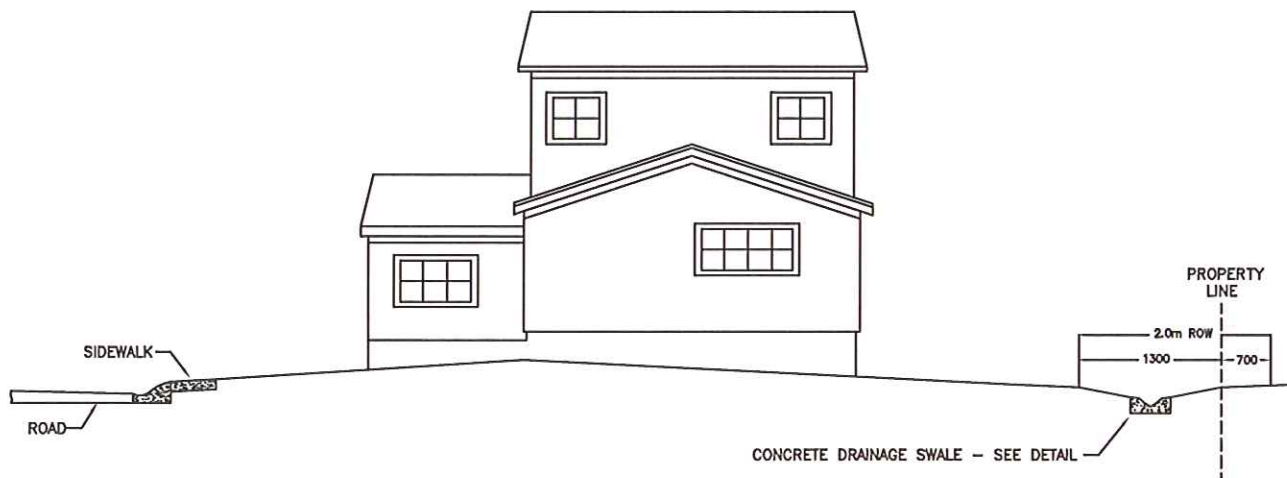
PLAN  
WALKOUT OR BACKSPLIT HOUSE TYPE



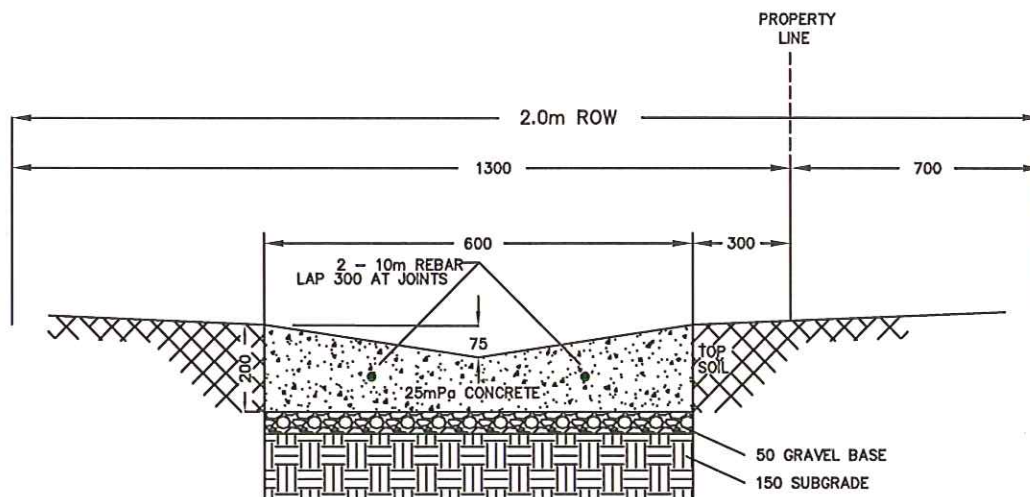
NOTE:

1. FINISH LANDSCAPE ELEVATION ADJACENT TO HOUSE TO BE 0.15m ABOVE EXISTING GROUND
2. ALL DIMENSIONS IN METRES UNLESS NOTED OTHERWISE.

			CITY OF COLD LAKE PUBLIC WORKS AND INFRASTRUCTURE DEPARTMENT		
			DATE:	ACAD - CIVIL DRAFTING STANDARD DETAILS	APPROVED BY:
			JAN. 2003		
			SCALE:	TYPICAL REAR LOT DRAINAGE TYPE C	DRAWING NO.
			N.T.S.		3.05
1	JAN 31, 2007	DRAWING NUMBER			
NO.	DATE	REVISION			



TYPICAL BACK OF LOT  
CONCRETE DRAINAGE SWALE  
N.T.S.

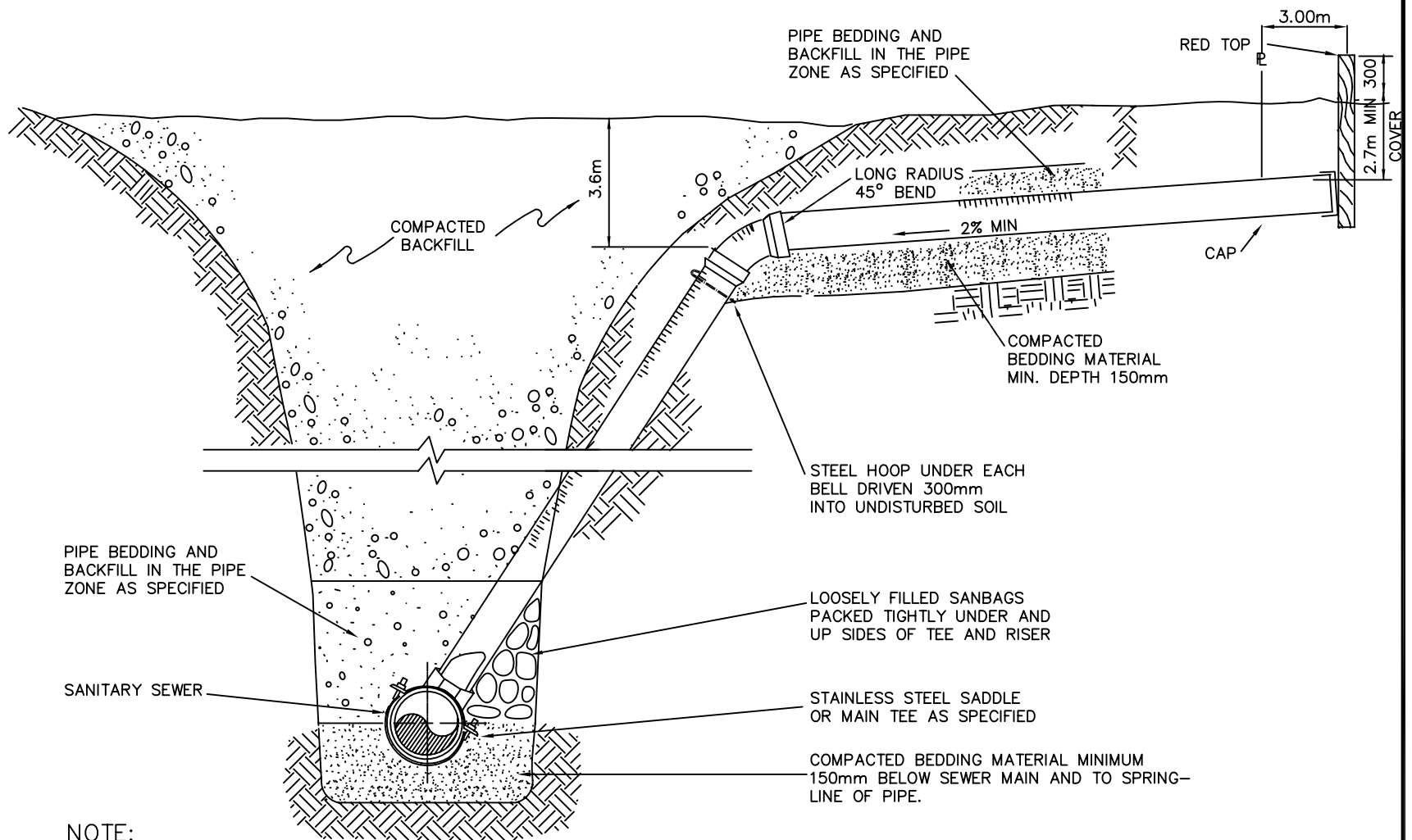


CONCRETE DRAINAGE SWALE  
N.T.S.

- NOTES: 1) NO PLANTING, OR  
OBSTRUCTIONS WITHIN 2.0m ROW  
2) ALL MEASUREMENTS ARE IN MILLIMETERS  
UNLESS OTHERWISE STATED

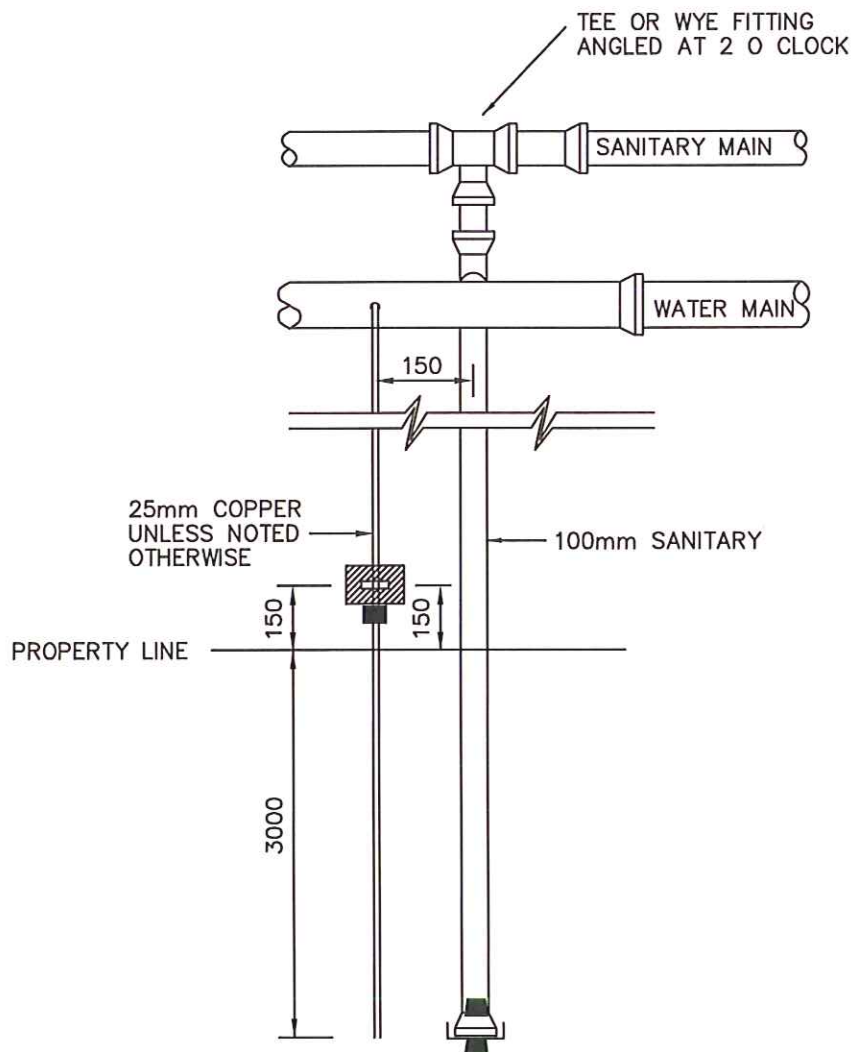
			CITY OF COLD LAKE PUBLIC WORKS AND INFRASTRUCTURE DEPARTMENT		
			DATE:	ACAD - CIVIL DRAFTING STANDARD DETAILS	APPROVED BY:
			May 9, 2016		
			SCALE:	LOT DRAINAGE SWALE	DRAWING NO.
			N.T.S.		3.06
1	2016-05-09	DRAWING NUMBER			
NO.	DATE	REVISION			

			CITY OF COLD LAKE PUBLIC WORKS AND INFRASTRUCTURE DEPARTMENT	
				APPROVED BY:
		DATE:		
		JAN. 2003	ACAD - CIVIL DRAFTING STANDARD DETAILS	
		SCALE:	SANITARY SEWER SERVICE CONNECTION RISER	DRAWING NO.
		N.T.S.		4.01
1	JAN 31, 2007	DRAWING NUMBER		
NO.	DATE	REVISION		



NOTE:

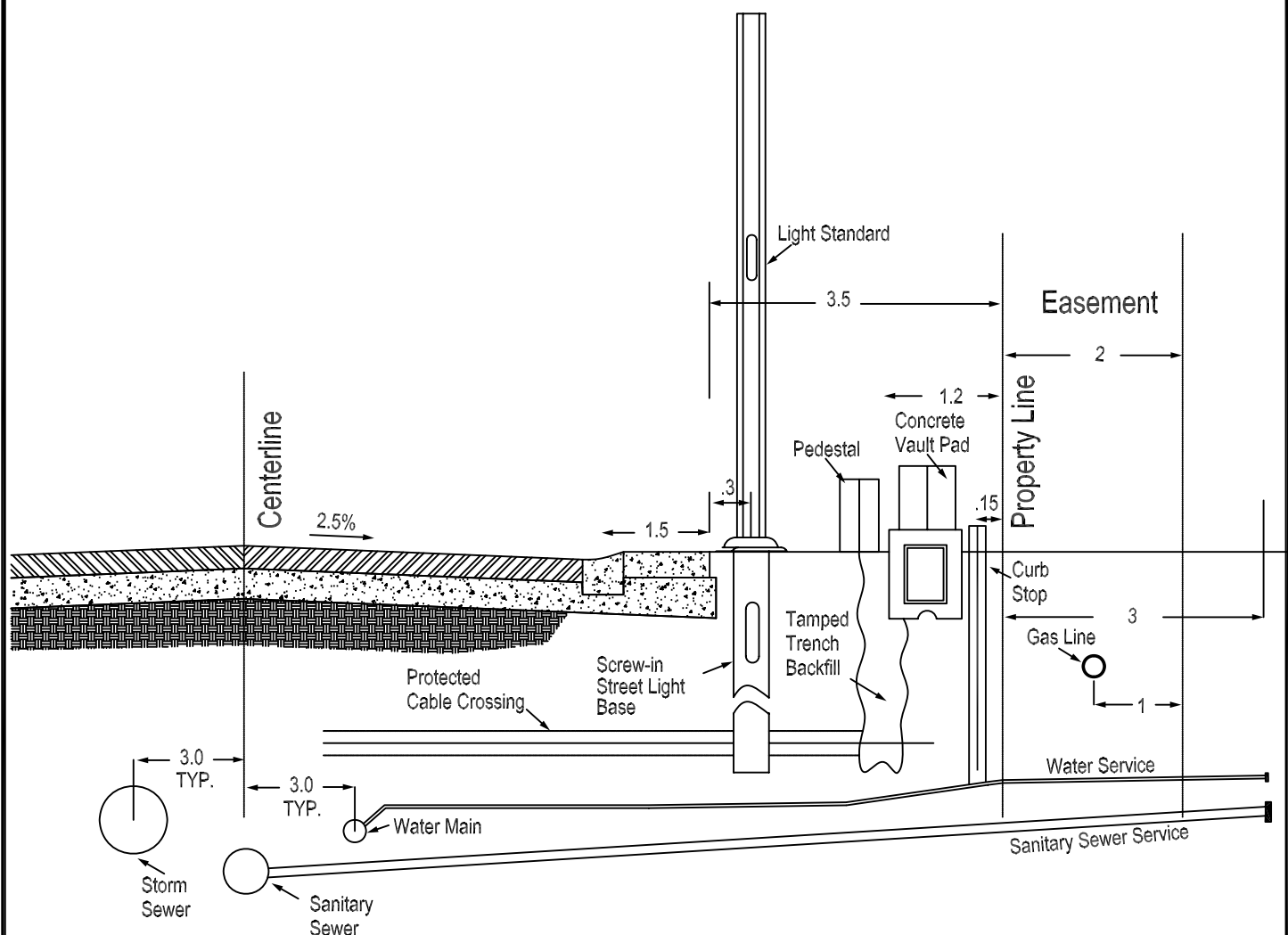
1. COMPACTION REQUIREMENTS AS PER DETAILED SPECIFICATIONS
2. ALL DIMENSIONS GIVEN IN MILLIMETRES
3. DEPTH OF COVER TO BE CONFIRMED BY THERMAL ANALYSIS.
4. RISER REQUIRED WHERE MAIN IS IN EXCESS OF 4.5m DEEP. RISERS SHALL BE INSTALLED TO WITHIN 3.6m OF FINISHED GRADE.



**NOTE:**

1. CITY OF COLD LAKE IS NOT RESPONSIBLE FOR OWNERSHIP OR MAINTENANCE OF SERVICE ON PRIVATE PROPERTY.
2. ENDS OF SERVICES TO BE MARKED WITH A 38mm x 90mm STAKE PROTRUING 300mm ABOVE GROUND PAINTED AS FOLLOWS:
  - A. CURBSTOP - BLUE
  - B. END OF SERVICE IN SEPERATE TRENCH - GREEN
  - C. END OF WATER SERVICE INSIDE PRIVATE PROPERTY - BLUE
3. ENDS OF ANY WATER SERVICE EXTENDED INTO PRIVATE PROPERTY TO HAVE FILTER CLOTH OR APPROVE EQUIVALENT TAPED ON END TO ALLOW TESTING OF CURBSTOP.
4. SEWER SERVICES MUST BE PROPERLY CAPPED
5. ALL DIMENSIONS GIVEN IN MILLIMETRES.
6. COMMERCIAL SANITARY SERVICE SHALL BE MINIMUM 150mm.

			CITY OF COLD LAKE PUBLIC WORKS AND INFRASTRUCTURE DEPARTMENT		
			DATE:	ACAD - CIVIL DRAFTING STANDARD DETAILS	APPROVED BY:
			JAN. 2003		
			SCALE:	SERVICE LAYOUT	DRAWING NO.
			N.T.S.		4.02
2	MAY 09, 2016	INSPECTION CHAMBER REMOVED			
1	JAN 31, 2007	DRAWING NUMBER			
NO.	DATE	REVISION			



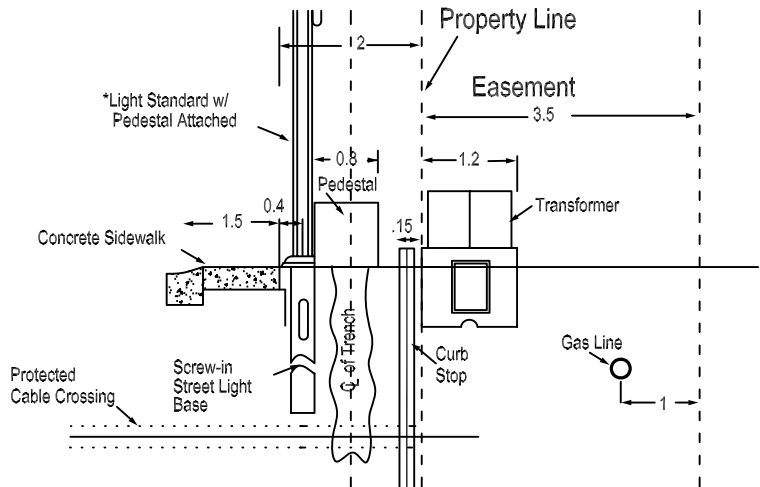
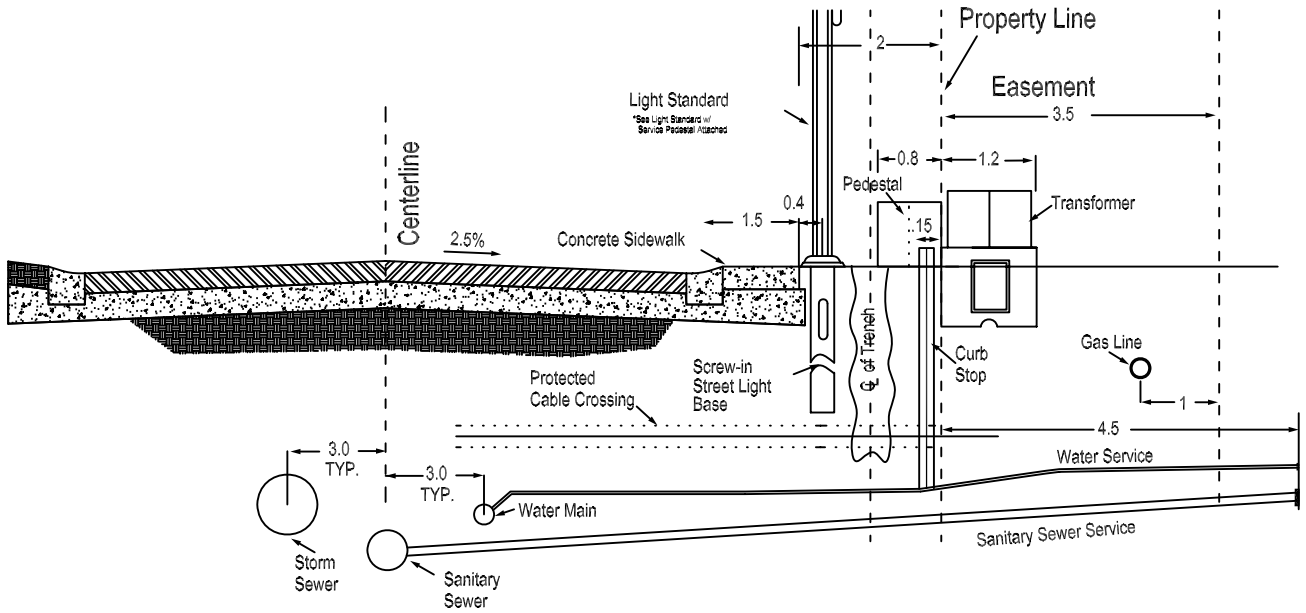
Notes: ALL DIMENSIONS ARE IN METERS  
RESIDENTIAL STREETS TO HAVE 10m Width  
N.T.S.

CITY OF COLD LAKE  
PUBLIC WORKS AND INFRASTRUCTURE DEPARTMENT

DATE:	ACAD - CIVIL DRAFTING	APPROVED BY:
JAN. 2003	STANDARD DETAILS	
SCALE:	STANDARD UTILITY DRAWING	DRAWING NO.
N.T.S.	SIDE VIEW, 2.0 M EASEMENT	4.03

1	JAN 31, 2007	DRAWING NUMBER
NO.	DATE	REVISION

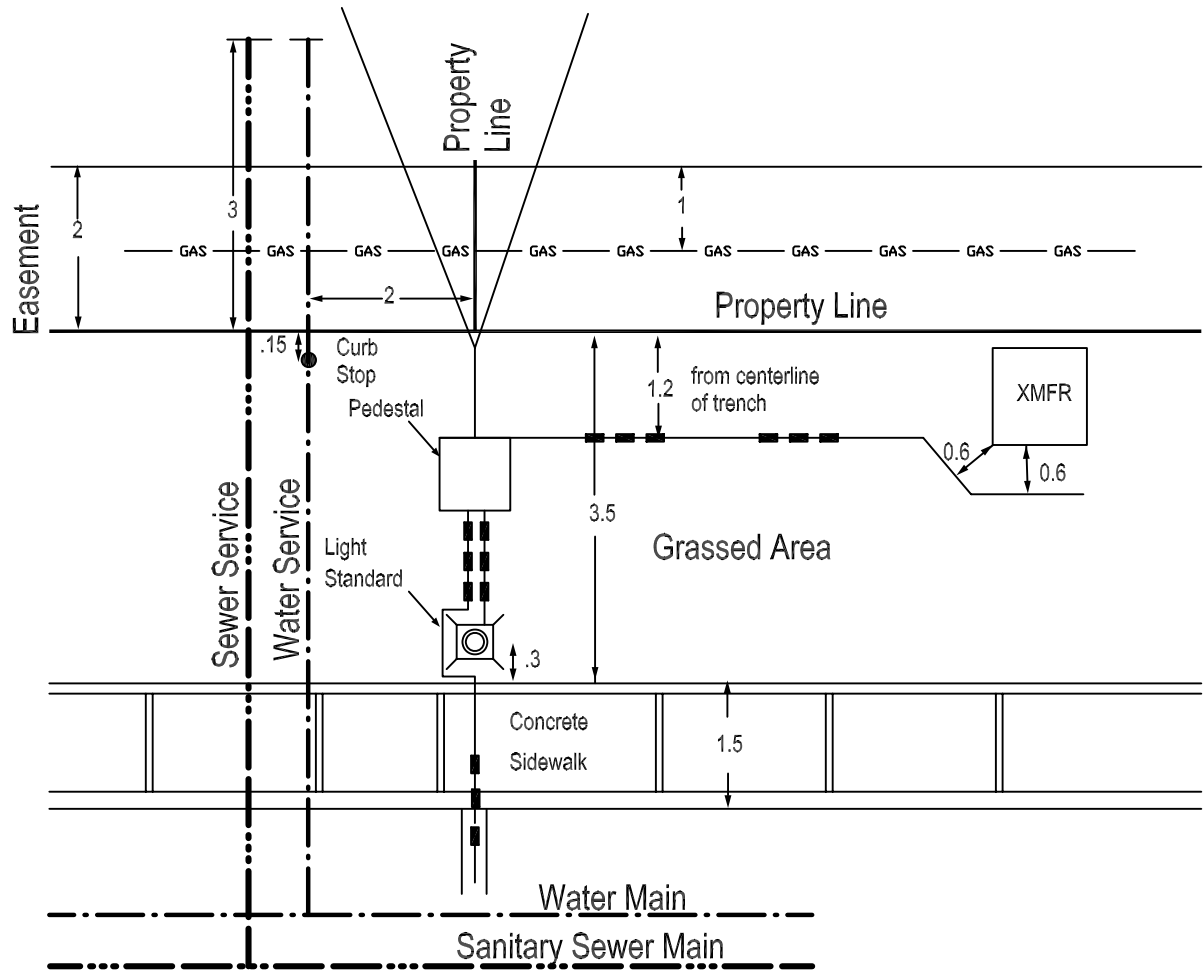




Notes: POWER CABLE TRENCHING TO BE DONE PRIOR TO STREET LIGHT BASE AND PEDESTAL INSTALLATION

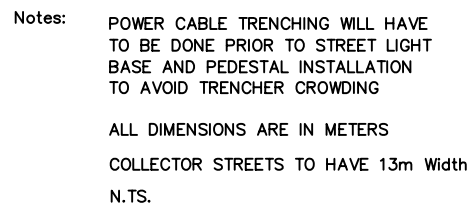
ALL DIMENSIONS ARE IN METERS  
COLLECTOR STREETS TO HAVE 13m Width  
N.T.S.

			CITY OF COLD LAKE		
			PUBLIC WORKS AND INFRASTRUCTURE DEPARTMENT		
			DATE:	ACAD - CIVIL DRAFTING STANDARD DETAILS	APPROVED BY:
			MAY 2002		
			SCALE:	STANDARD UTILITY DRAWING, SIDE VIEW, 3.5M EASEMENT	DRAWING NO.  4.04
			N.T.S.		
1	JAN 31, 2007	DRAWING NUMBER			
NO.	DATE	REVISION			

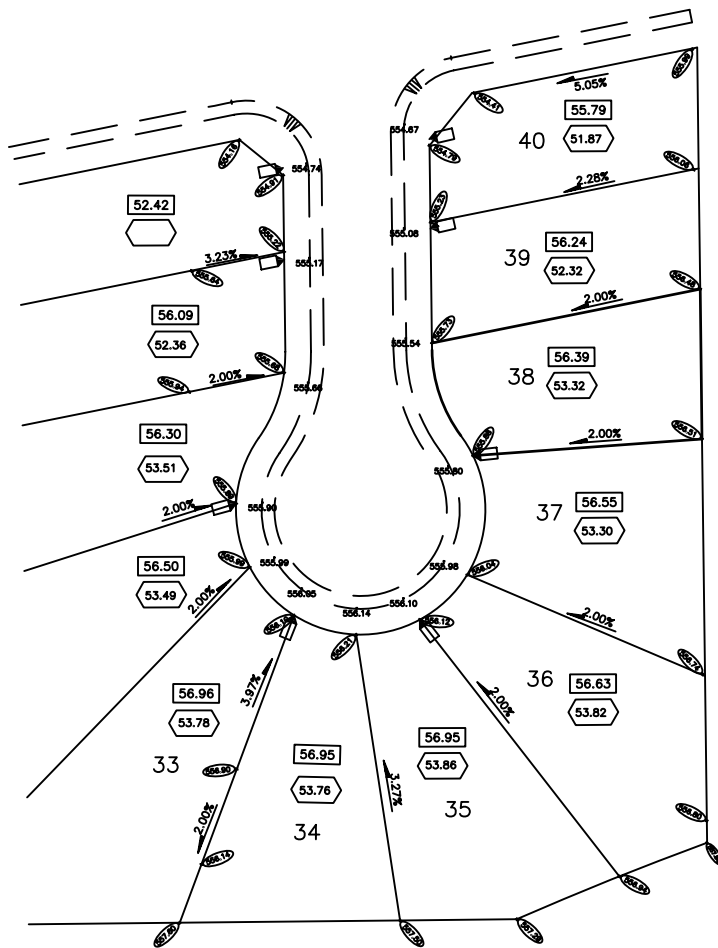


NOTES: ALL DIMENSIONS IN METERS

			CITY OF COLD LAKE		
			PUBLIC WORKS AND INFRASTRUCTURE DEPARTMENT		
			DATE:	ACAD - CIVIL DRAFTING STANDARD DETAILS	APPROVED BY:
			JAN. 2007		
			SCALE:	STANDARD UTILITY DRAWING PLAN VIEW, 2.0 METER EASEMENT	DRAWING NO.
			N.T.S.		4.05
NO.	DATE	REVISION			



			CITY OF COLD LAKE PUBLIC WORKS AND INFRASTRUCTURE DEPARTMENT		
			DATE:	ACAD - CIVIL DRAFTING STANDARD DETAILS	APPROVED BY:
			JAN. 2003		
			SCALE:	STANDARD UTILITY DRAWING	DRAWING NO.
			N.T.S.	PLAN VIEW, 3.5 METER EASEMENT	4.06
1	JAN 31, 2007	DRAWING NUMBER			
NO.	DATE	REVISION			



SUBDIVISION NAME: \_\_\_\_\_

CIVIC ADDRESS: \_\_\_\_\_

DEVELOPER: \_\_\_\_\_

BUILDER: \_\_\_\_\_

OWNER: \_\_\_\_\_

DATE: \_\_\_\_\_

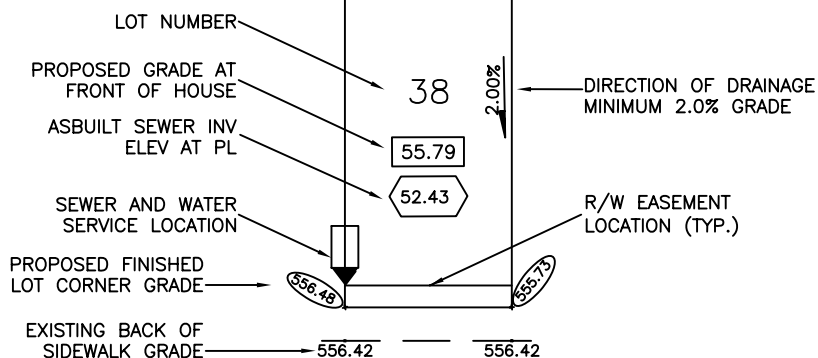
I CERTIFY THAT THE FINAL LANDSCAPE GRADES WILL BE WITHIN 50mm OF THE PROPOSED FINISHED LOT CORNER GRADES AS INDICATED ON THIS CERTIFICATE

\_\_\_\_\_  
SIGNATURE OF OWNER OR OWNERS AGENT

GRADING TYPE \_\_\_\_\_  
HOUSE TYPE \_\_\_\_\_  
FINISHED FLOOR \_\_\_\_\_  
BOTTOM OF FOOTING \_\_\_\_\_  
TOP OF BASEMENT WALL \_\_\_\_\_  
GARAGE FLOOR \_\_\_\_\_

LOT 38  
BLOCK 21  
PLAN 062 1621

NOTE:

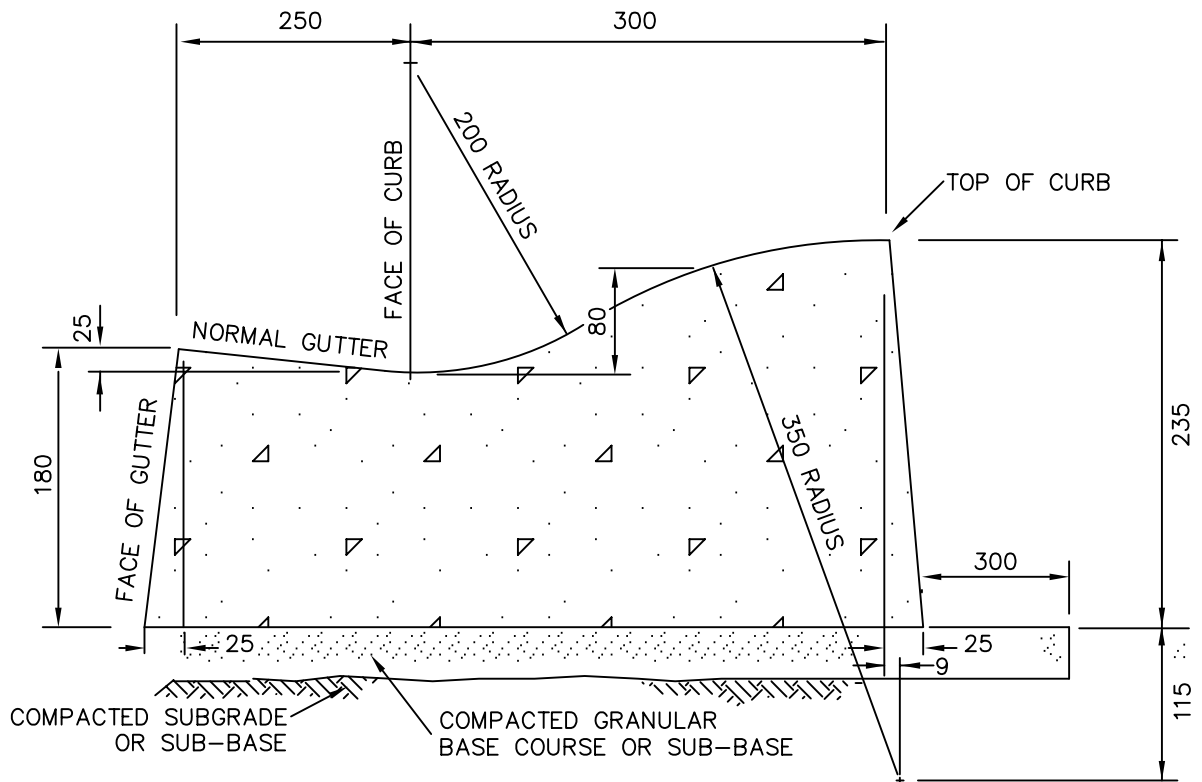


**NOTES:**

1. INITIAL MINIMUM GRADE OF 10% OVER A DISTANCE OF 1.5m AT SIDES & 10% OVER A DISTANCE OF 3M AT FRONT AND BACK.
2. MINIMUM STANDARD LOT GRADE IS 2.0%
3. ROUGH GRADE LOT ELEVATIONS ARE 300mm BELOW FINAL GRADES. FINAL GRADES TO BE SET +/- 50mm.
4. DESIGN LOT ELEVATIONS PROVIDED BY: (Name of Consulting Engineer) \_\_\_\_\_

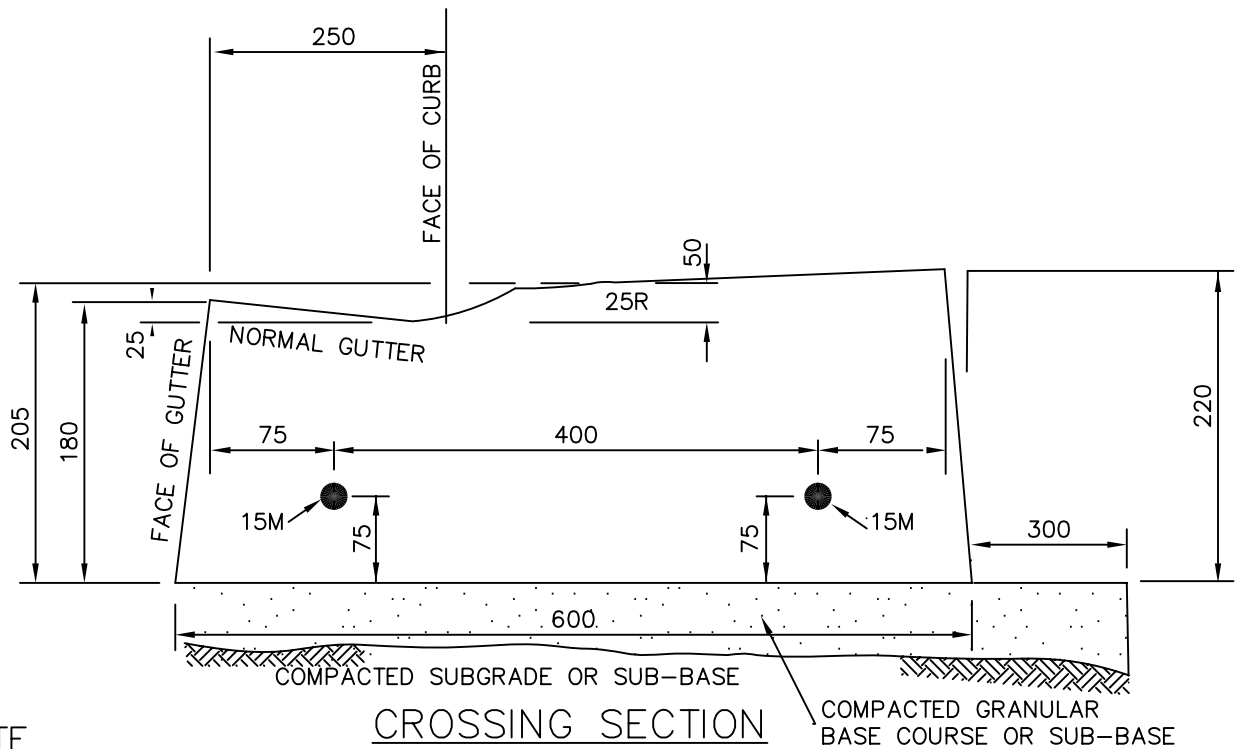
THIS GRADE SLIP IS PREPARED BY THE DEVELOPER. THE CITY OF COLD LAKE IS NOT RESPONSIBLE FOR THE INFORMATION PROVIDED.

			CITY OF COLD LAKE PUBLIC WORKS AND INFRASTRUCTURE DEPARTMENT		
			DATE:	ACAD - CIVIL DRAFTING STANDARD DETAILS	APPROVED BY:
			JAN. 2007		
			SCALE:		
1	JAN 31, 2007	REVISED DRAWING NUMBER	N.T.S.	NEW RESIDENTIAL BUILDING GRADE PLAN	DRAWING NO.
NO.	DATE	REVISION			



TYPICAL ROLLED CURB & GUTTER

N.T.S



CROSSING SECTION

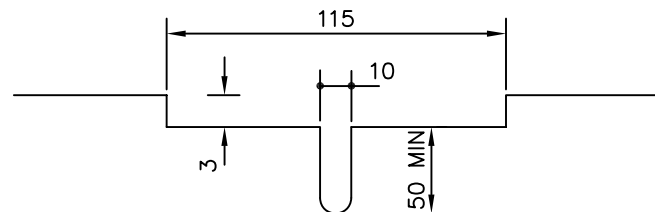
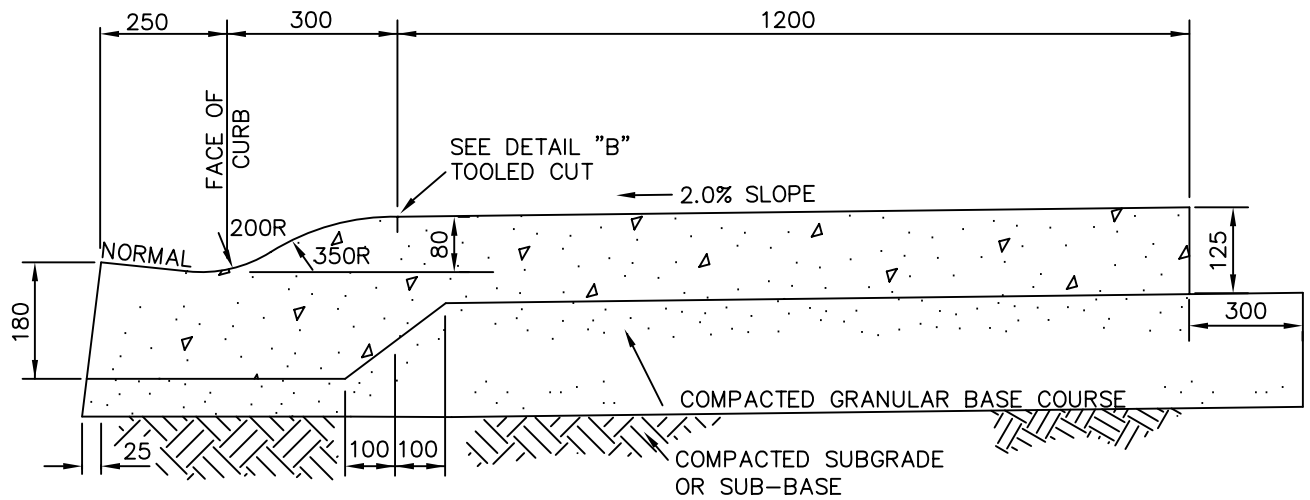
N.T.S

NOTE

1. ALL DIMENSIONS ARE IN MILLIMETRES
2. REINFORCEMENT NOT REQUIRED AT PRIVATE CROSSING

			CITY OF COLD LAKE		
			PUBLIC WORKS AND INFRASTRUCTURE DEPARTMENT		
			DATE:	ACAD - CIVIL DRAFTING STANDARD DETAILS	APPROVED BY:
			JAN. 2003		
			SCALE:	TYPICAL ROLLED CURB & GUTTER AND CROSSING DETAILS	DRAWING NO. 5.01
			N.T.S.		
1	JAN 31, 2007	DRAWING NUMBER			
NO.	DATE	REVISION			

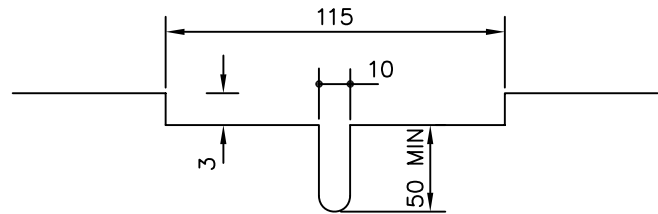
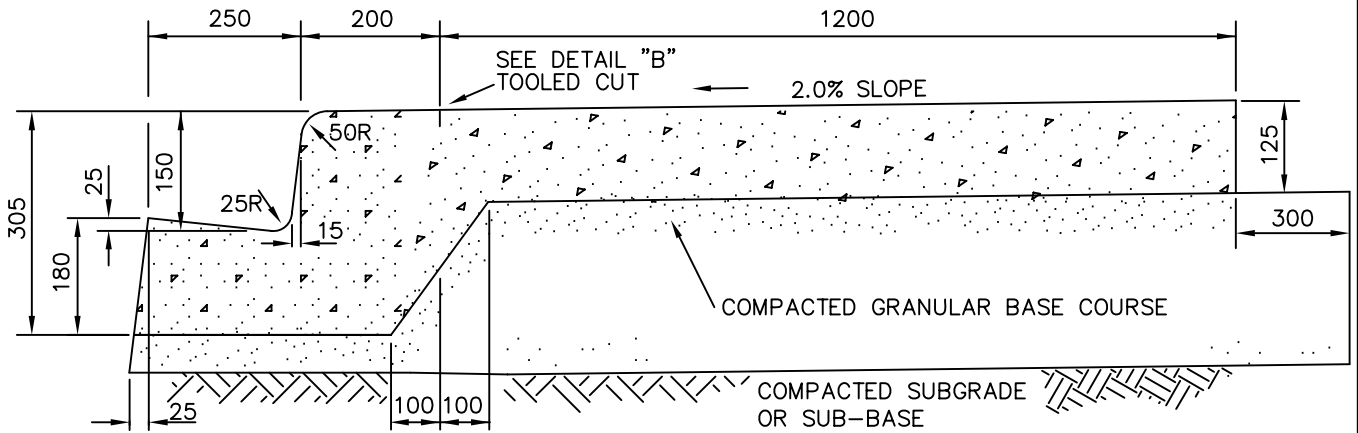




**NOTE:**

1. ALL DIMENSIONS ARE IN MILLIMETRES.

			CITY OF COLD LAKE		
			PUBLIC WORKS AND INFRASTRUCTURE DEPARTMENT		
			DATE:	ACAD - CIVIL DRAFTING	APPROVED BY:
			JAN. 2003	STANDARD DETAILS	
			SCALE:	ROLLED MONOLITHIC CURB,	DRAWING NO.
			N.T.S.	GUTTER & SIDEWALK	5.03
1	JAN 31, 2007	DRAWING NUMBER			
NO.	DATE	REVISION			



DETAIL "B"

**NOTE:**

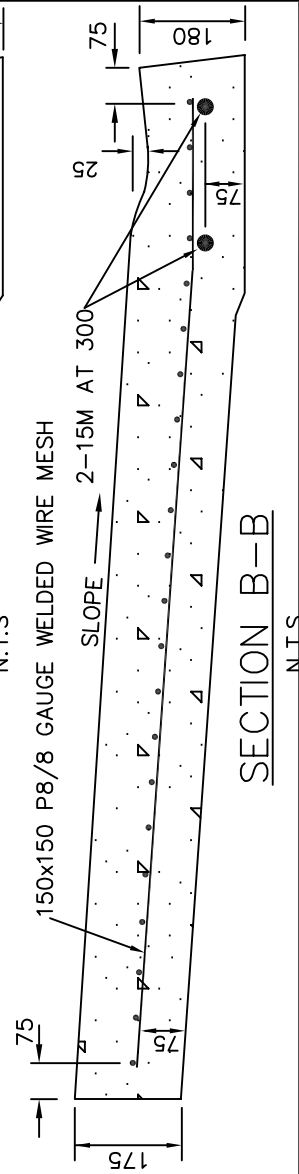
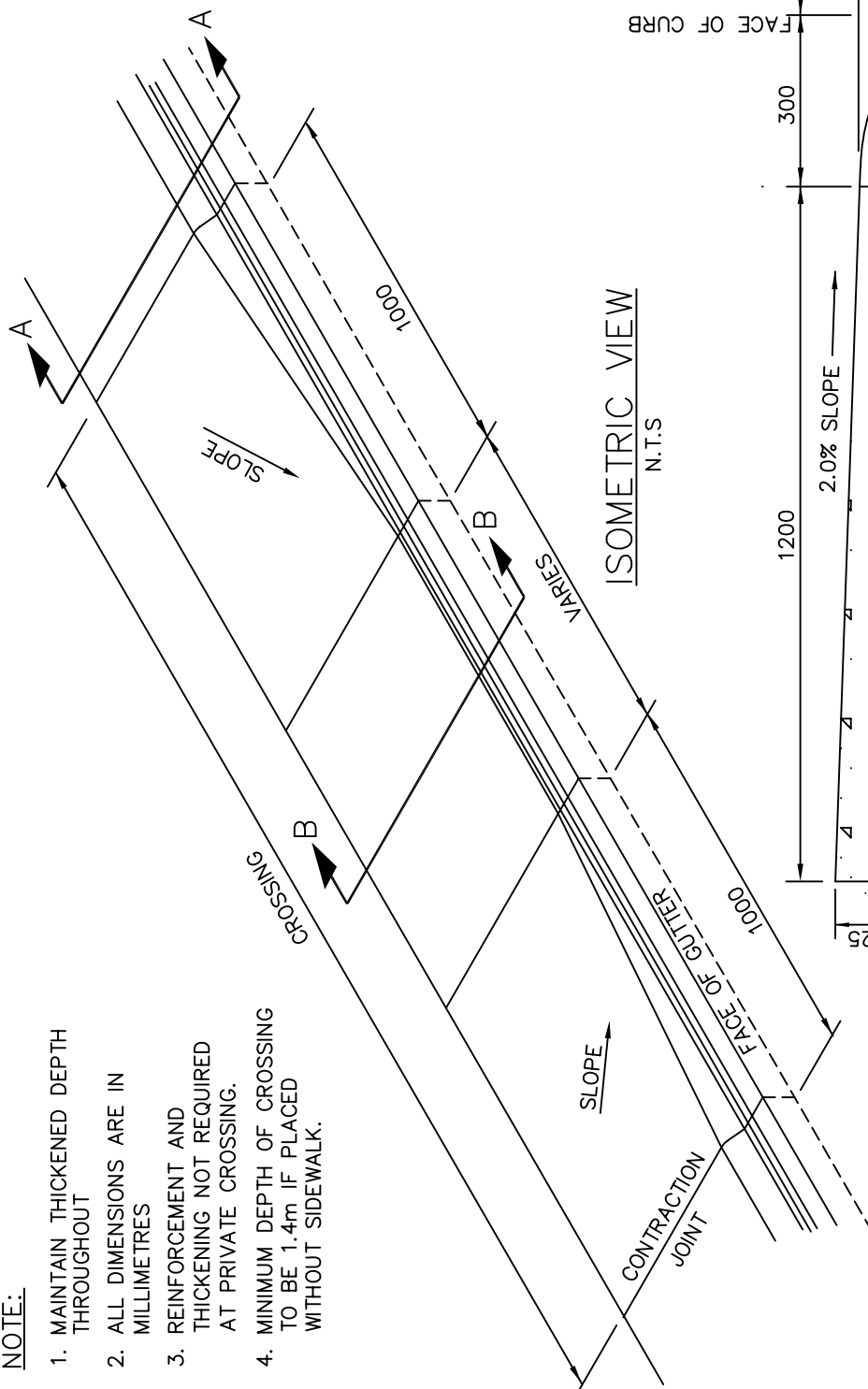
1. ALL DIMENSIONS ARE IN MILLIMETRES.

			CITY OF COLD LAKE		
			PUBLIC WORKS AND INFRASTRUCTURE DEPARTMENT		
			DATE:	ACAD - CIVIL DRAFTING	APPROVED BY:
			JAN. 2003	STANDARD DETAILS	
			SCALE:	150mm BARRIER MONOLITHIC	DRAWING NO.
			N.T.S.	CURB, GUTTER & SIDEWALK	5.04
1	JAN 31, 2007	DRAWING NUMBER			
NO.	DATE	REVISION			



**NOTE:**

1. MAINTAIN THICKENED DEPTH THROUGHOUT
2. ALL DIMENSIONS ARE IN MILLIMETRES
3. REINFORCEMENT AND THICKENING NOT REQUIRED AT PRIVATE CROSSING.
4. MINIMUM DEPTH OF CROSSING TO BE 1.4m IF PLACED WITHOUT SIDEWALK.



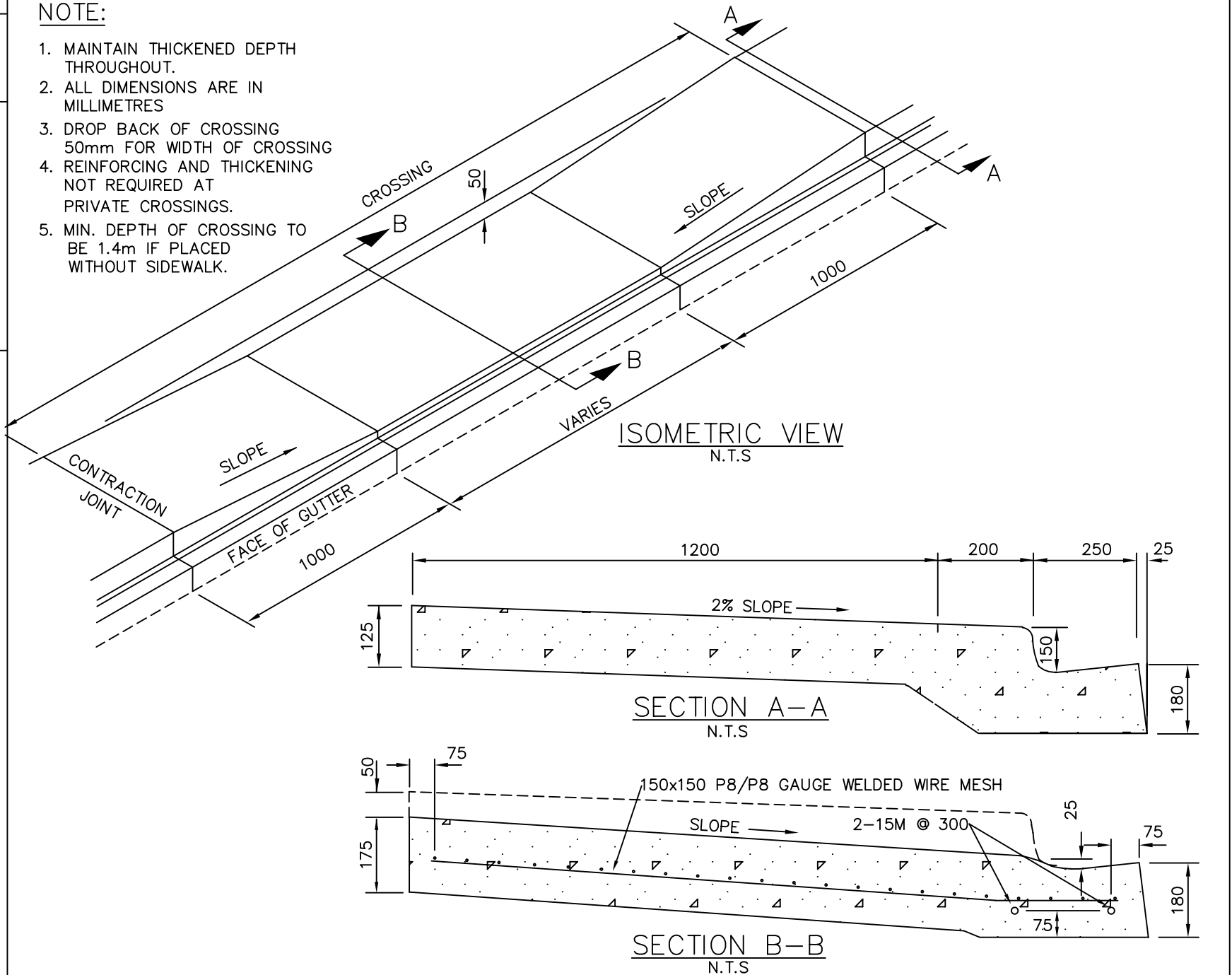
CITY OF COLD LAKE PUBLIC WORKS AND INFRASTRUCTURE DEPARTMENT			
DATE: JAN. 2003		ACAD - CIVIL DRAFTING STANDARD DETAILS	
SCALE: N.T.S.		APPROVED BY:	
1 JAN 31, 2007		DRAWING NO. 5.05	
NO. DATE		DRAWING NUMBER REVISION	

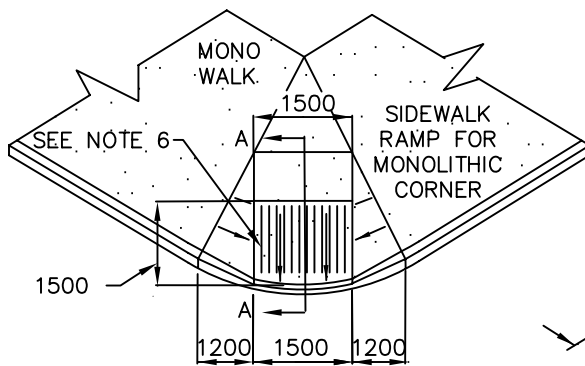
**ROLLED MONOLITHIC  
CROSSING DETAILS**

NO.	1	DATE	JAN 31, 2007	REVISION	DRAWING NUMBER	SCALE	N.T.S.	CITY OF COLD LAKE PUBLIC WORKS AND INFRASTRUCTURE DEPARTMENT	ACAD - CIVIL DRAFTING STANDARD DETAILS	APPROVED BY:	DRAWING NO.	5.06
-----	---	------	--------------	----------	----------------	-------	--------	---	---	--------------	-------------	------

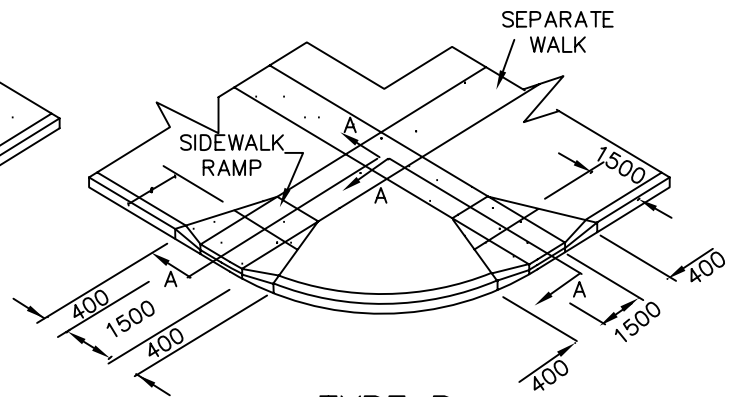
# NOTE:

1. MAINTAIN THICKENED DEPTH THROUGHOUT.
2. ALL DIMENSIONS ARE IN MILLIMETRES
3. DROP BACK OF CROSSING 50mm FOR WIDTH OF CROSSING
4. REINFORCING AND THICKENING NOT REQUIRED AT PRIVATE CROSSINGS.
5. MIN. DEPTH OF CROSSING TO BE 1.4m IF PLACED WITHOUT SIDEWALK.

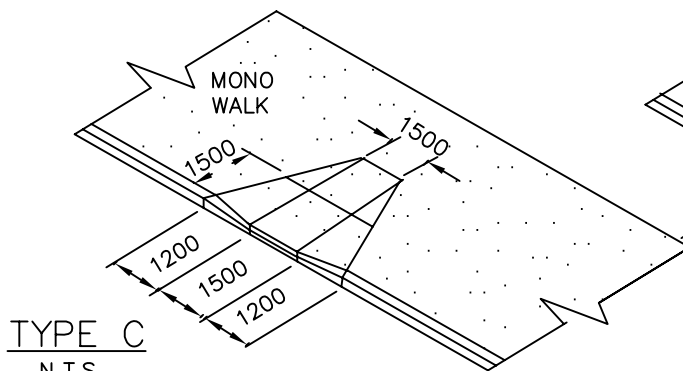




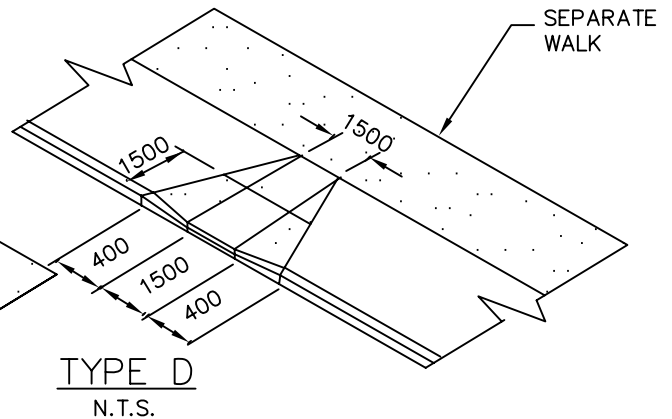
**TYPE A**  
N.T.S.



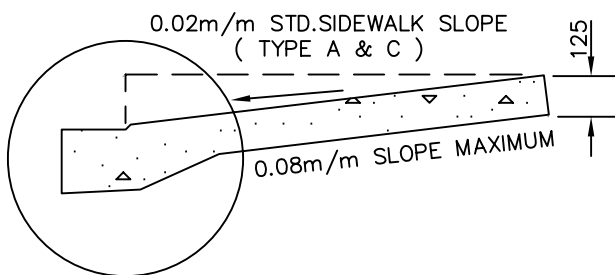
**TYPE B**  
N.T.S.



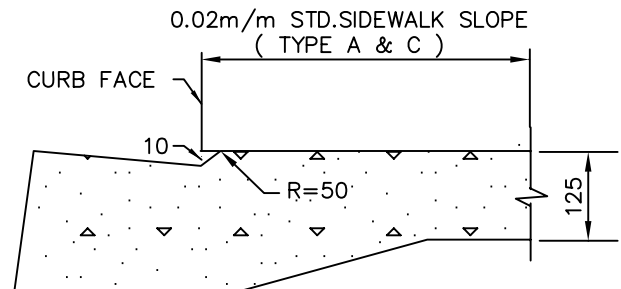
**TYPE C**  
N.T.S.



**TYPE D**  
N.T.S.



SCALE: HOR. 1:25  
VERT. 1:20

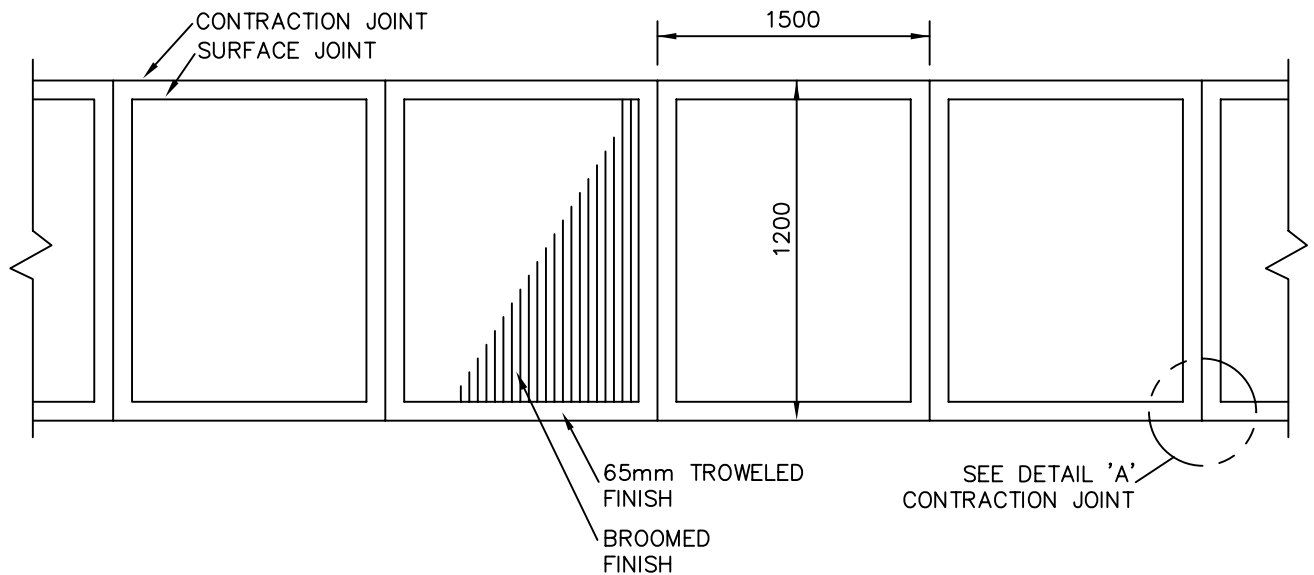


SCALE: HOR. 1:10  
VERT. 1:10

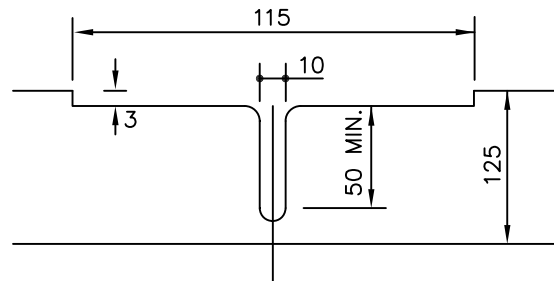
## NOTES:

1. WHERE RAMP IS TO BE USED AS A TRANSITION. USE THE CENTRE OF THE 1500mm RAMP AS THE CENTRE OF THE TRANSITION.
2. WHERE CURB FACE IS 200mm. DISTANCE OF FLARE SHOULD BE 1600mm.
3. CURBS AND RAMPS TO BE POURED MONOLITHICALLY.
4. CONSTRUCTION JOINT REQUIRED AT EACH SIDE OF RAMP.
5. ALL DIMENSIONS IN MILLIMETRES UNLESS OTHERWISE NOTED
6. TOOLED GROOVES 5mm WIDE BY 10mm DEEP AT 150 o.c., TYP. TYPE A, B, C AND D.

			CITY OF COLD LAKE PUBLIC WORKS AND INFRASTRUCTURE DEPARTMENT		
			DATE:	ACAD - CIVIL DRAFTING STANDARD DETAILS	APPROVED BY:
			JAN. 2003		
			SCALE:	WHEEL CHAIR/BIKE RAMP DETAILS	DRAWING NO.
			N.T.S.		5.07
2	JAN 31, 2007	DRAWING NUMBER			
1.	SEPT 06	REVISION 1			
NO.	DATE	REVISION			



PLAN  
N.T.S

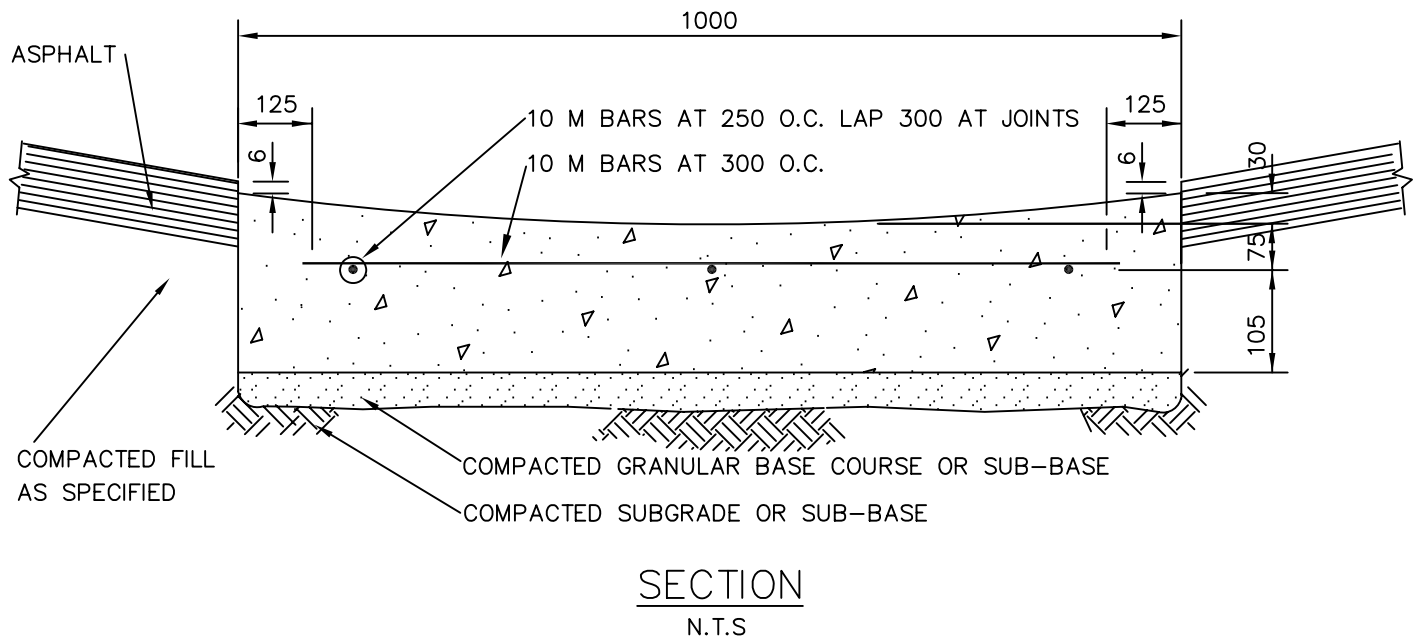
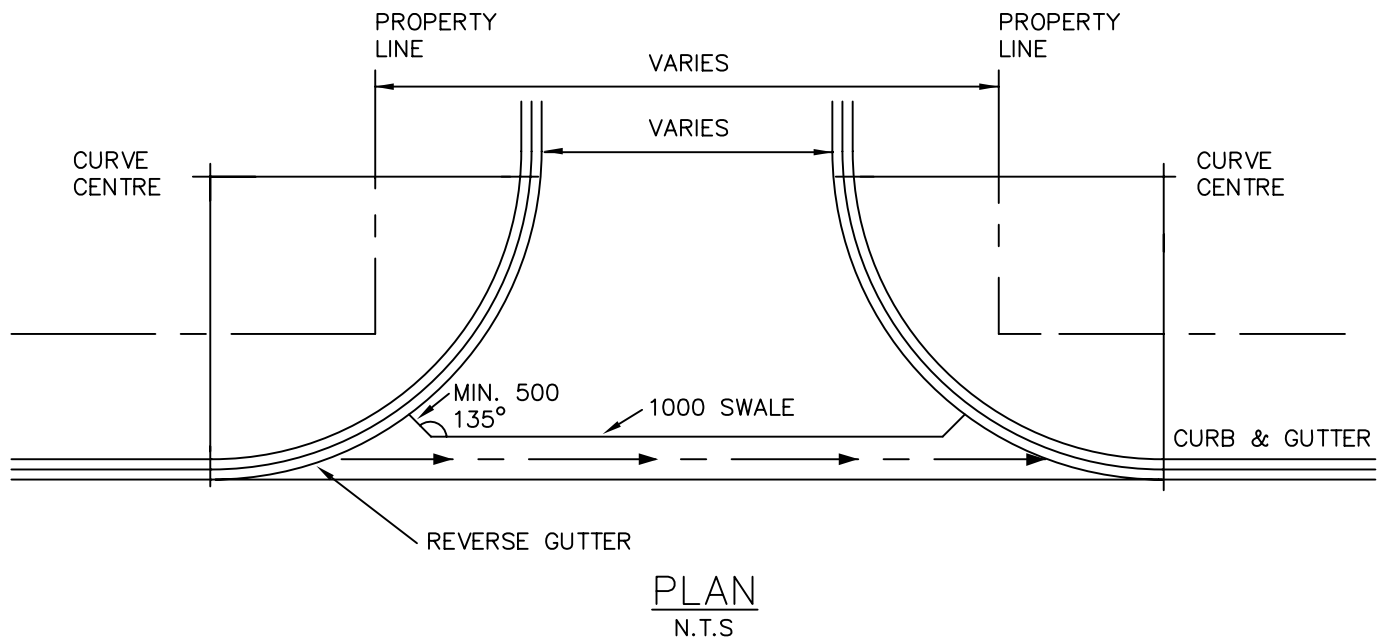


DETAIL 'A'  
N.T.S

NOTES:

1. SIDEWALK CROSS-FALL TO BE 2% TOWARDS TOP OF CURB.
2. EXPANSION MATERIAL SHALL BE PLACED WHEN ABUTTING EXISTING STRUCTURES.
3. SIDEWALK SHALL HAVE A "BROOMED" FINISH.
4. TRANSVERSE CONTRACTION JOINTS AT THE END OF EACH POUR, AND AT 3m INT.
5. TRANSVERSE SURFACE JOINTS EVERY 3 METRES MIDWAY BETWEEN CONTRACTION JOINTS.
6. ALL DIMENSIONS ARE GIVEN IN MILLIMETRES.

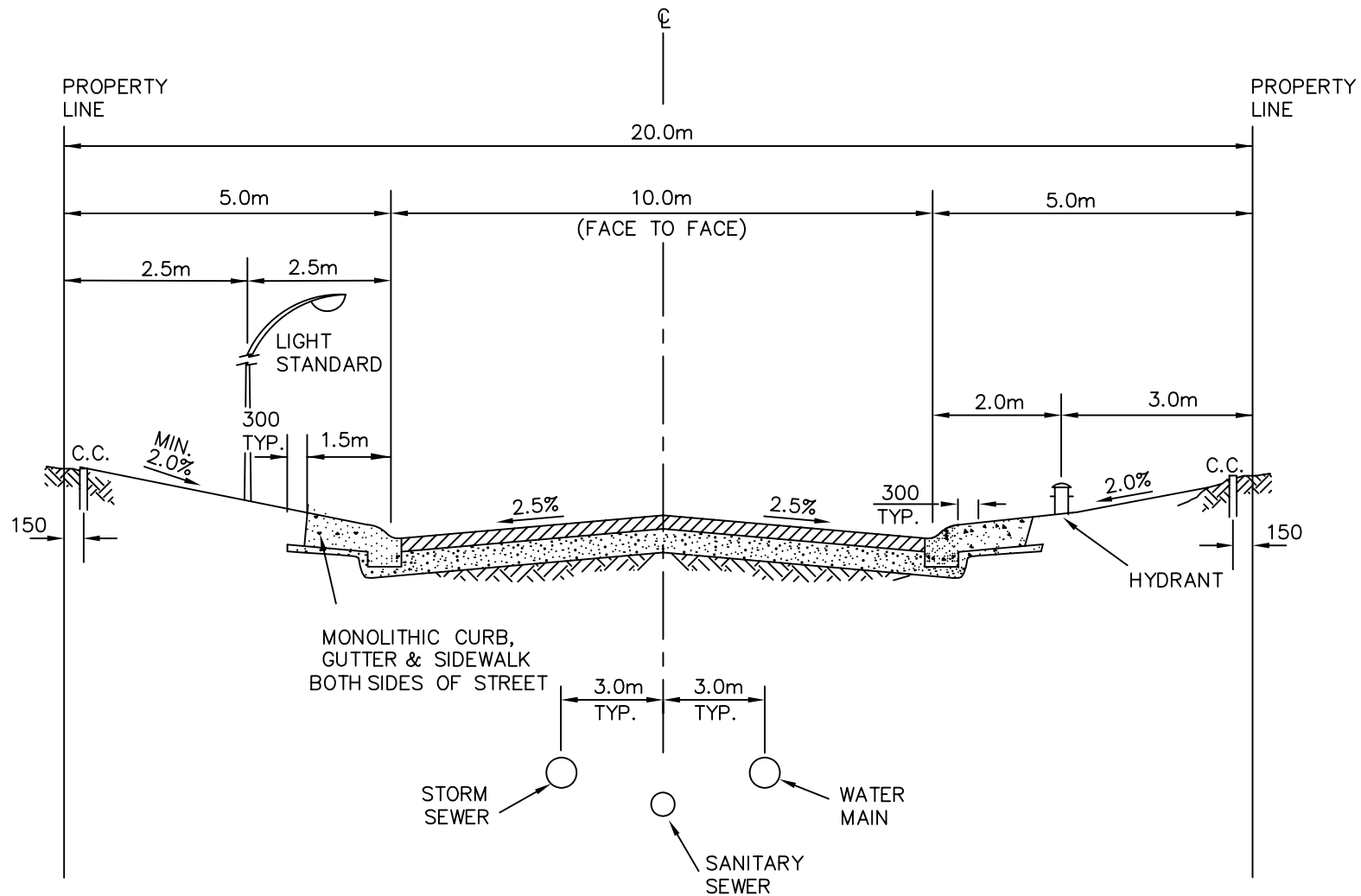
			CITY OF COLD LAKE PUBLIC WORKS AND INFRASTRUCTURE DEPARTMENT		
			DATE:	ACAD - CIVIL DRAFTING STANDARD DETAILS	APPROVED BY:
			JAN. 2003		
			SCALE:	SEPARATE SIDEWALK DETAILS	DRAWING NO.
			N.T.S.		5.08
1	JAN 31, 2007	DRAWING NUMBER			
NO.	DATE	REVISION			



- NOTE:**
1. ALL DIMENSIONS ARE IN MILLIMETRES
  2. CONTRACTION JOINTS SPACED AT 3m INTERVAL

			CITY OF COLD LAKE		
			PUBLIC WORKS AND INFRASTRUCTURE DEPARTMENT		
			DATE:	ACAD - CIVIL DRAFTING	APPROVED BY:
			JAN. 2003	STANDARD DETAILS	
			SCALE:	1000mm CONCRETE SWALE	DRAWING NO.
			N.T.S.	PLAN & SECTION	5.09
1	JAN 31, 2007	DRAWING NUMBER			
NO.	DATE	REVISION			

			<b>CITY OF COLD LAKE</b>		
			<b>PUBLIC WORKS AND INFRASTRUCTURE DEPARTMENT</b>		
			DATE:		APPROVED BY:
			JAN. 2003	ACAD - CIVIL DRAFTING STANDARD DETAILS	
			SCALE:	10.0m RESIDENTIAL STREET SECTION WITH MONO SIDEWALK	DRAWING NO.
			N.T.S.		5.10
1	JAN 31, 2007	DRAWING NUMBER AND STREET WIDTH			
NO.	DATE	REVISION			

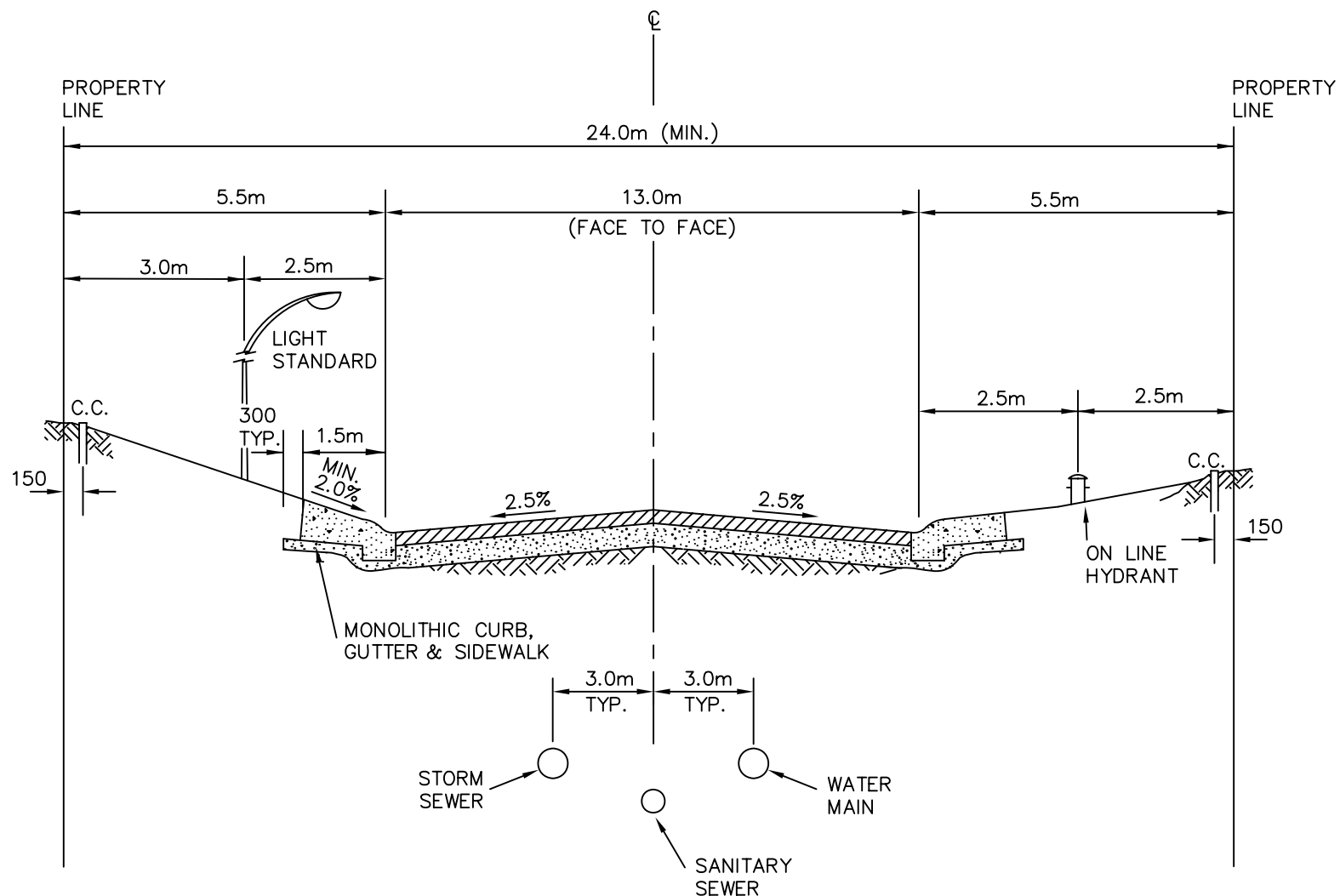


SECTION  
N.T.S

NOTES:

1. ALL DIMENSIONS ARE IN MILLIMETRES UNLESS OTHERWISE NOTED.
2. RTAC CLASSIFICATION ULU-50.
3. SEPERATE SIDEWALK IS OPTIONAL IN LIEU OF MONOLITHIC SIDEWALK

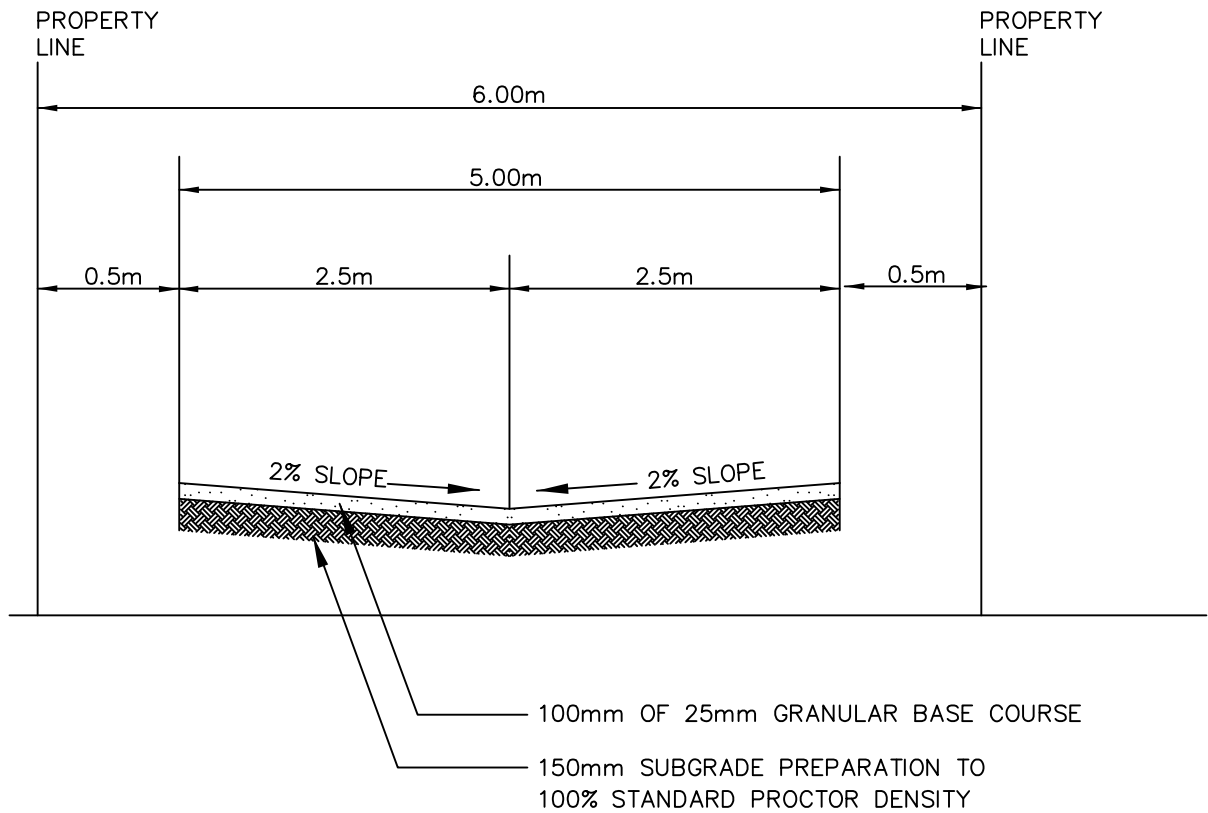
		<b>CITY OF COLD LAKE</b>		
		<b>PUBLIC WORKS AND INFRASTRUCTURE DEPARTMENT</b>		
		DATE:		APPROVED BY:
		JAN. 2003	ACAD - CIVIL DRAFTING STANDARD DETAILS	
		SCALE:	13.0m COLLECTOR STREET SECTION WITH MONO SIDEWALK	DRAWING NO.
		N.T.S.		5.11
NO.	DATE	REVISION		
1	JAN 31, 2007	DRAWING NUMBER		



SECTION  
N.T.S

NOTES:

1. ALL DIMENSIONS ARE IN MILLIMETRES UNLESS OTHERWISE NOTED.
2. RTAC CLASSIFICATION UCU-50.
3. SEPARATE SIDEWALK IS OPTIONAL IN LIEU OF MONOLITHIC SIDEWALK

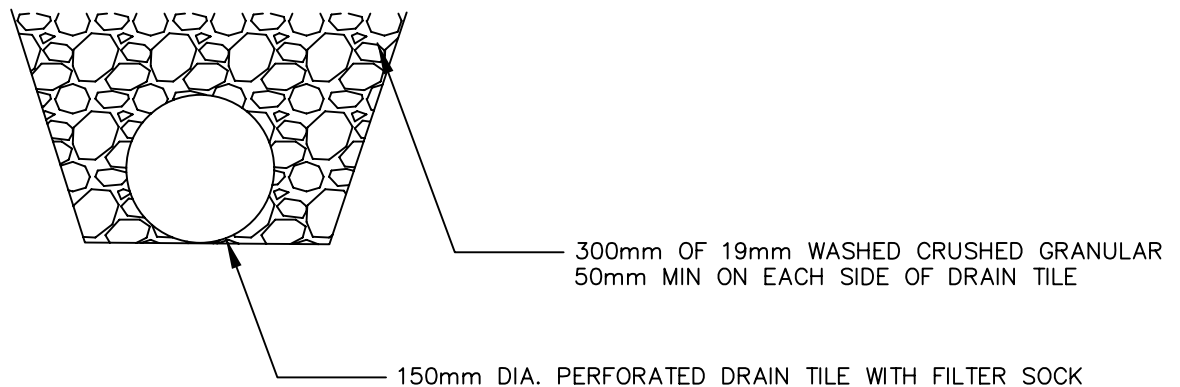
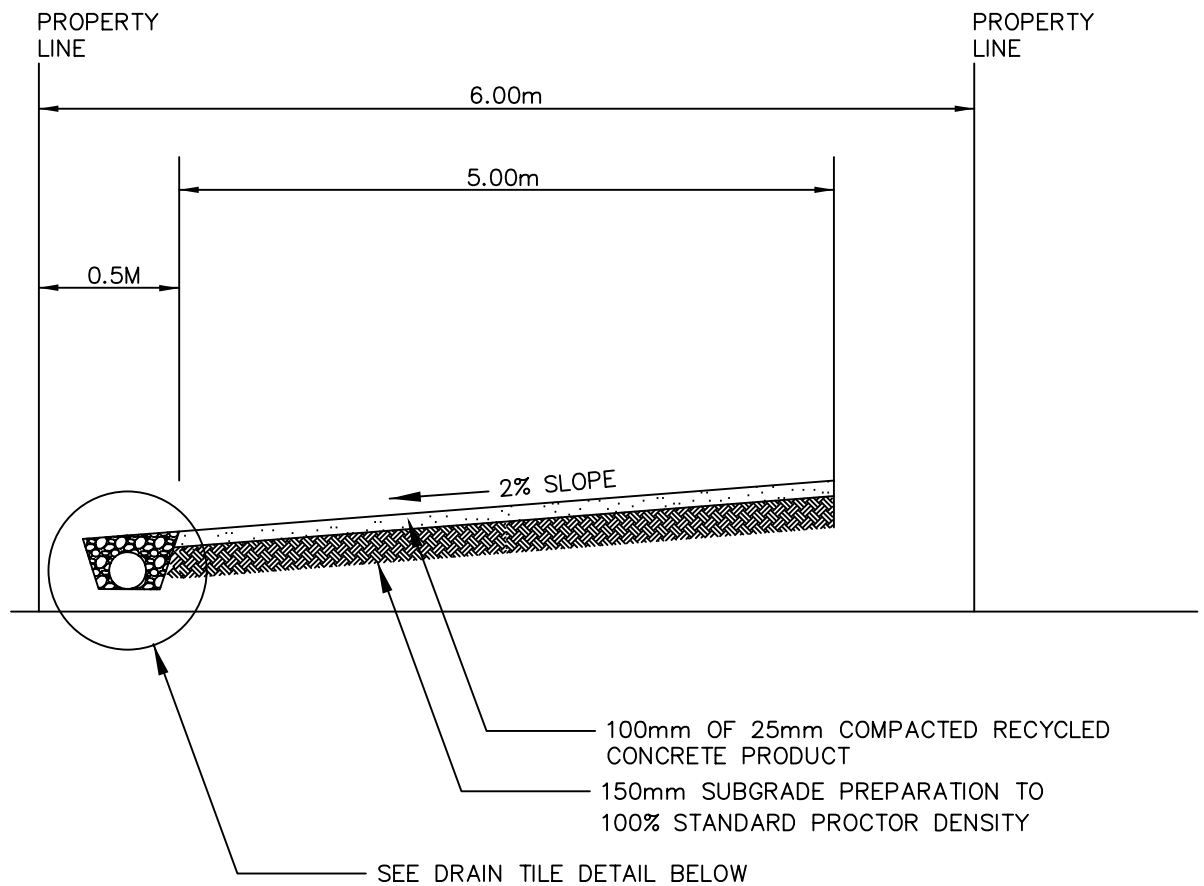


#### NOTES:

1. MINIMUM LANE STRUCTURE. LANEWAY TO BE DESIGNED BASED ON SITE SPECIFIC SOIL CONDITIONS AND TRAFFIC LOADINGS.
2. ALL DIMENSIONS ARE IN MILLIMETRES UNLESS OTHERWISE NOTED.
3. EDGE OF LANES TO BE WRAPPED TO FIT DRIVEWAYS.

			CITY OF COLD LAKE		
			PUBLIC WORKS AND INFRASTRUCTURE DEPARTMENT		
			DATE:	ACAD - CIVIL DRAFTING	APPROVED BY:
			JAN. 2003	STANDARD DETAILS	
			SCALE:	5.0m	DRAWING NO.
			N.T.S.	RESIDENTIAL LANE	5.12
1	JAN 31, 2007	DRAWING NUMBER			
NO.	DATE	REVISION			





#### DRAIN TILE DETAIL

#### NOTES:

1. MINIMUM LANE STRUCTURE. ROADWAY TO BE DESIGNED BASED ON SITE SPECIFIC SOIL CONDITIONS AND TRAFFIC LOADINGS.
2. ALL DIMENSIONS ARE IN MILLIMETRES UNLESS OTHERWISE NOTED.

			CITY OF COLD LAKE		
			PUBLIC WORKS AND INFRASTRUCTURE DEPARTMENT		
			DATE:	ACAD - CIVIL DRAFTING STANDARD DETAILS	APPROVED BY:
			JULY 2006		
			SCALE:		
			N.T.S.	5.0m CROSS SLOPED RESIDENTIAL LANE WITH DRAIN TILE	DRAWING NO. 5.13
1	JAN 31, 2007	DRAWING NUMBER			
NO.	DATE	REVISION			

PROPERTY  
LINE

SITE

PROPERTY  
LINE

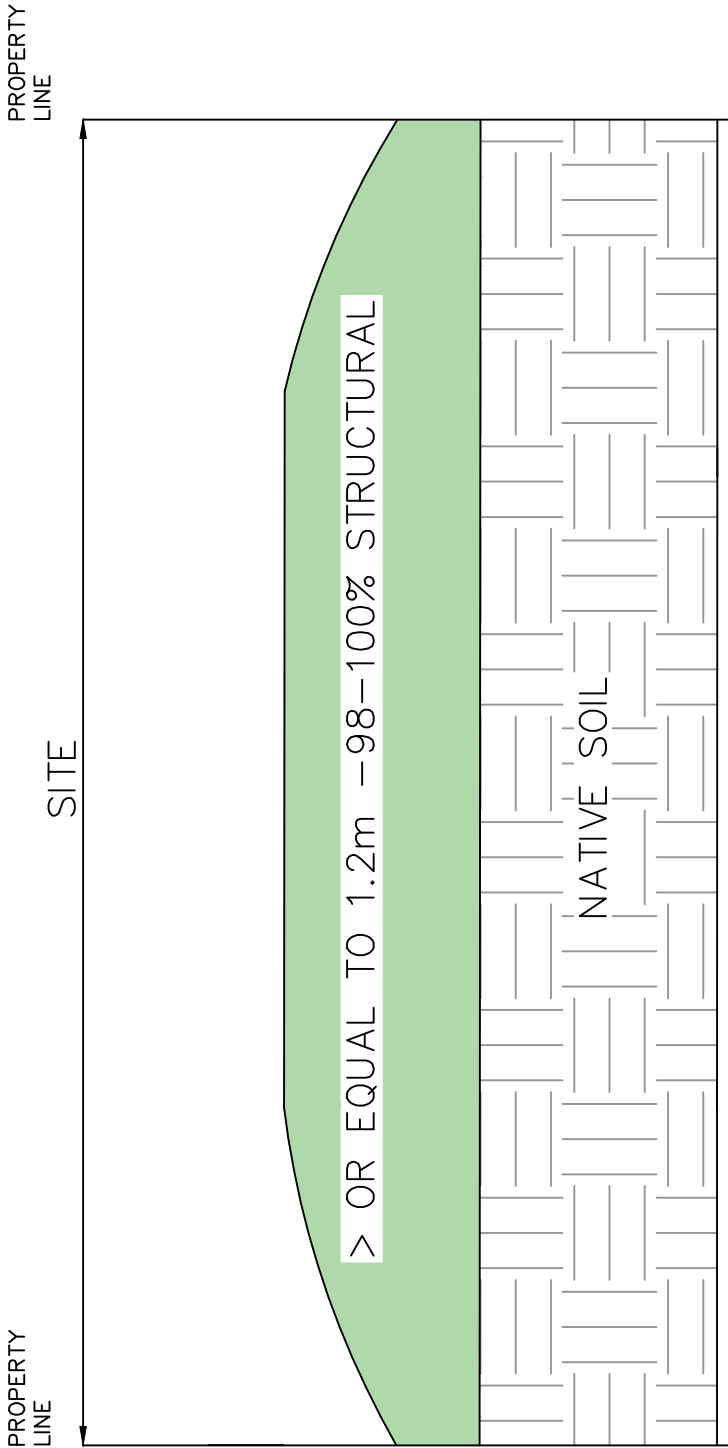
< 1.2M - 95% NON STRUCTURAL

NATIVE SOIL

SITE GRADING COMPACTION LESS THAN 1.2m - NON STRUCTURAL  
N.T.S

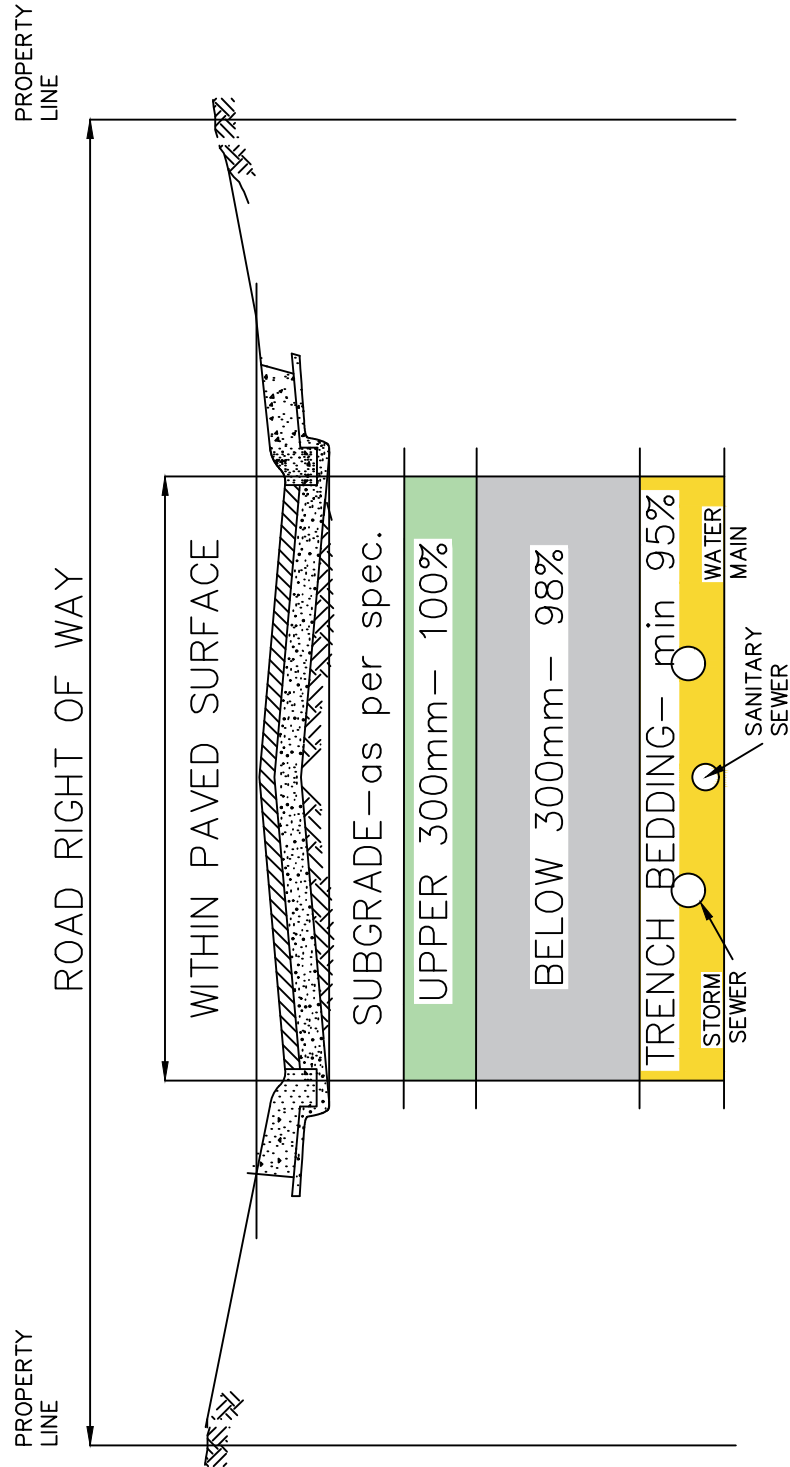
			CITY OF COLD LAKE PUBLIC WORKS AND INFRASTRUCTURE DEPARTMENT		
			DATE:	ACAD - CIVIL DRAFTING STANDARD DETAILS	APPROVED BY:
			JULY 2017		
			SCALE:	SITE GRADING COMPACTION LESS THAN 1.2m NON STRUCTURAL	DRAWING NO.
1	NOV 16, 2017	DRAWING NUMBER	N.T.S.		5.14
NO.	DATE	REVISION			

			CITY OF COLD LAKE PUBLIC WORKS AND INFRASTRUCTURE DEPARTMENT		
			DATE:	ACAD - CIVIL DRAFTING STANDARD DETAILS	APPROVED BY:
			JULY 2017		
			SCALE:	SITE GRADING COMPACTION GREATER THAN OR EQUAL TO 1.2m STRUCTURAL	DRAWING NO. <b>5.15</b>
1	NOV 16, 2017	DRAWING NUMBER	N.T.S.		
NO.	DATE	REVISION			



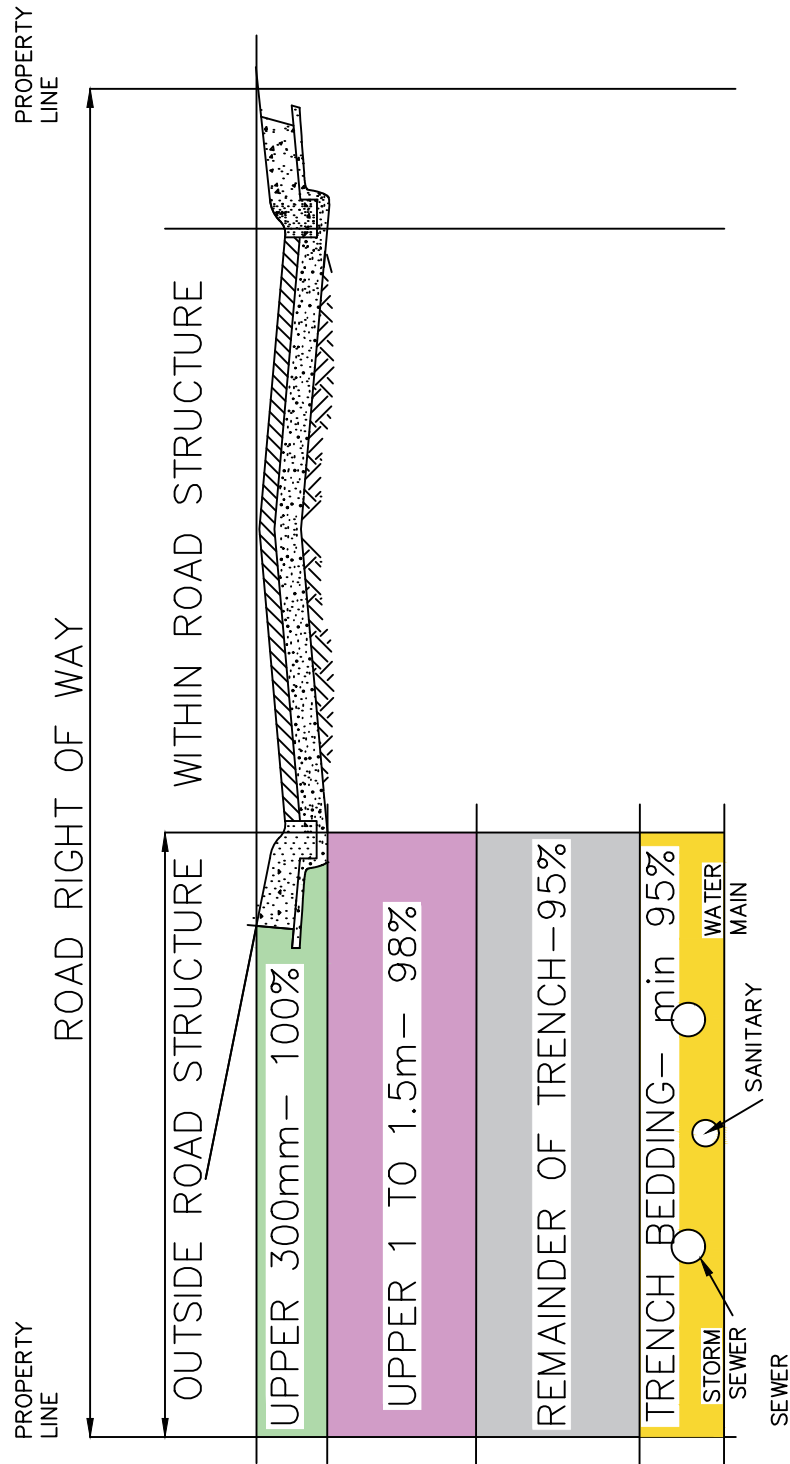
SITE GRADING COMPACTION GREATER THAN OR EQUAL TO 1.2m- STRUCTURAL\*  
N.T.S

\*ACTUAL SPECIFICATIONS SHOULD BE DETERMINED BY A GEOTECHNICAL ENGINEER



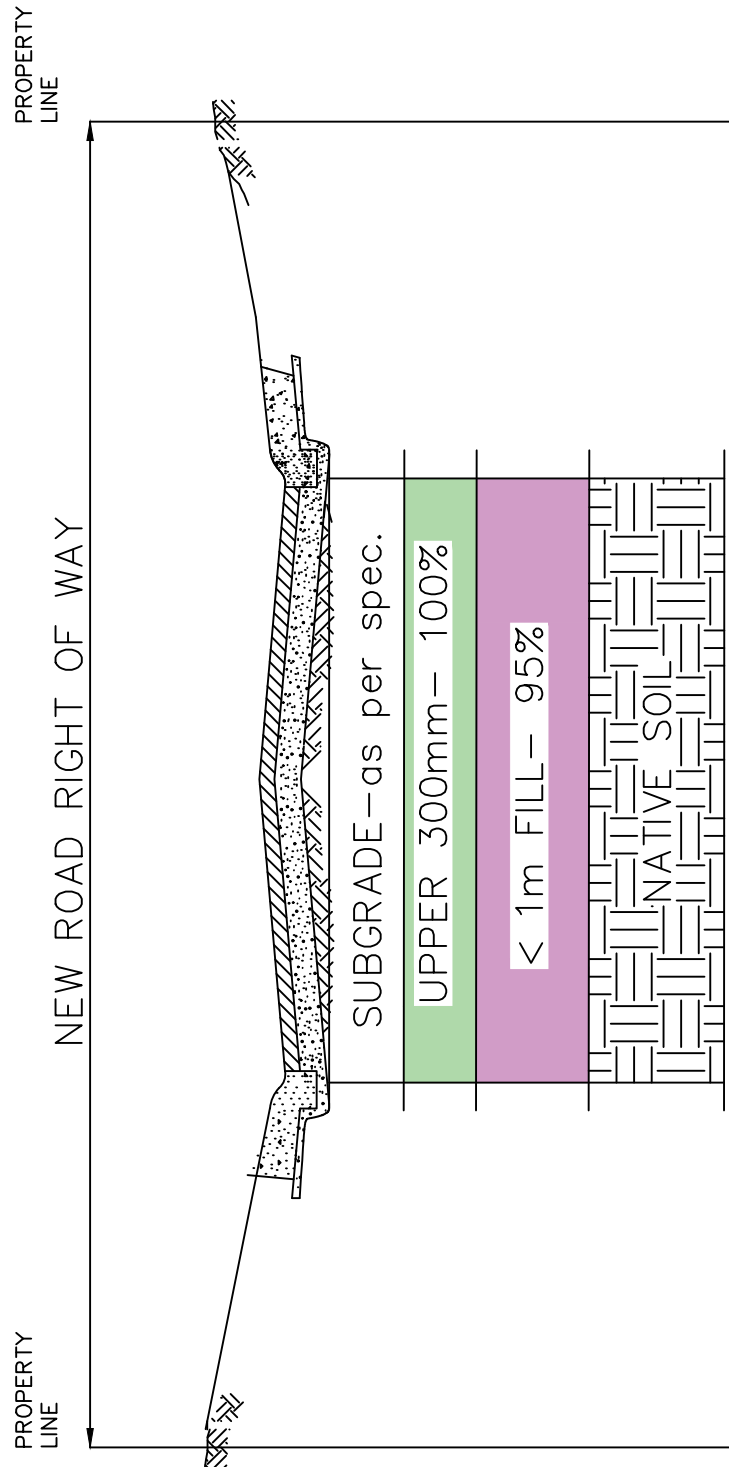
TRENCH COMPACTION— WITHIN ROAD STRUCTURE— existing & new  
N.T.S

			CITY OF COLD LAKE				
			PUBLIC WORKS AND INFRASTRUCTURE DEPARTMENT				
			DATE:	ACAD - CIVIL DRAFTING STANDARD DETAILS	APPROVED BY:		
			JULY 2017				
			SCALE:	TRENCH BACKFILL WITHIN ROADS	DRAWING NO.  5.16		
			N.T.S.				
1	NOV 17, 2017	DRAWING NUMBER					
NO.	DATE	REVISION					



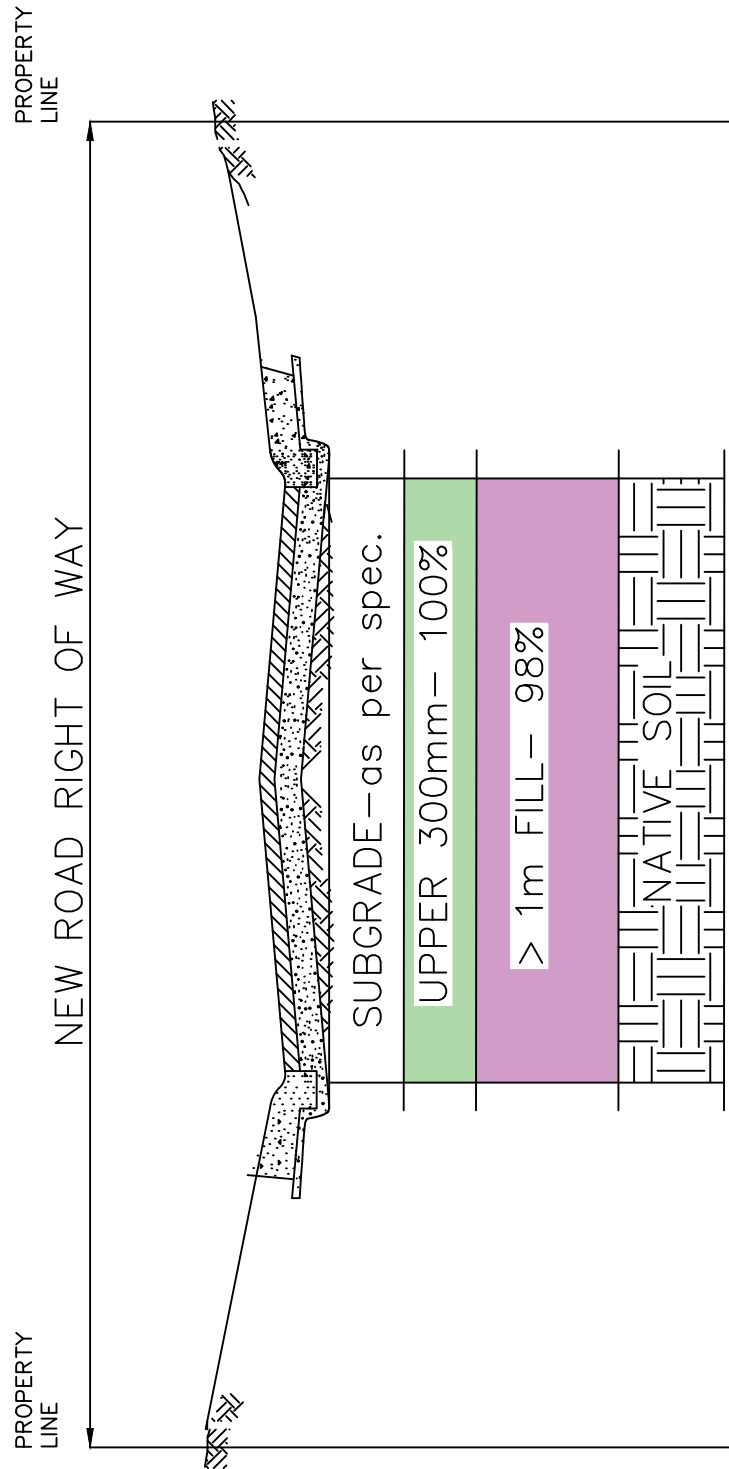
TRENCH COMPACTION – OUTSIDE ROAD STRUCTURE – existing & new  
N.T.S

			CITY OF COLD LAKE				
			PUBLIC WORKS AND INFRASTRUCTURE DEPARTMENT				
			DATE:	ACAD - CIVIL DRAFTING STANDARD DETAILS	APPROVED BY:		
			JULY 2017				
			SCALE:	TRENCH BACKFILL OUTSIDE ROADS	DRAWING NO.  5.17		
			N.T.S.				
1	NOV 17, 2017	DRAWING NUMBER					
NO.	DATE	REVISION					



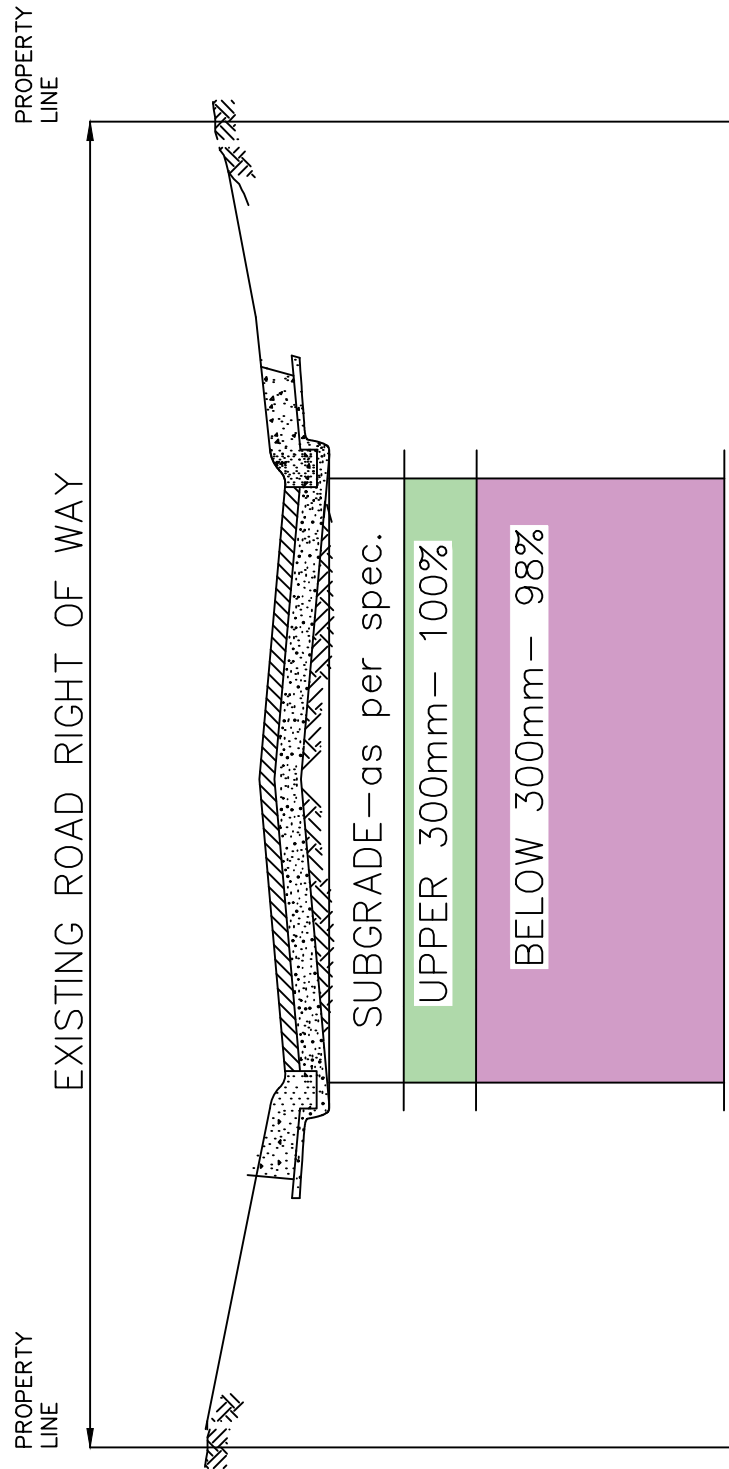
ROADWAY EMBANKMENT COMPACTION- NEW ROAD- < 1m FILL  
N.T.S

			CITY OF COLD LAKE PUBLIC WORKS AND INFRASTRUCTURE DEPARTMENT		
			DATE:	ACAD - CIVIL DRAFTING STANDARD DETAILS	APPROVED BY:
			JULY 2017		
			SCALE:	EMBANKMENT COMPACTION NEW ROADS LESS THAN 1m FILL	DRAWING NO.
			N.T.S.		5.18
1	NOV 17, 2017	DRAWING NUMBER			
NO.	DATE	REVISION			



ROADWAY EMBANKMENT COMPACTION- NEW ROAD- > 1m FILL  
N.T.S

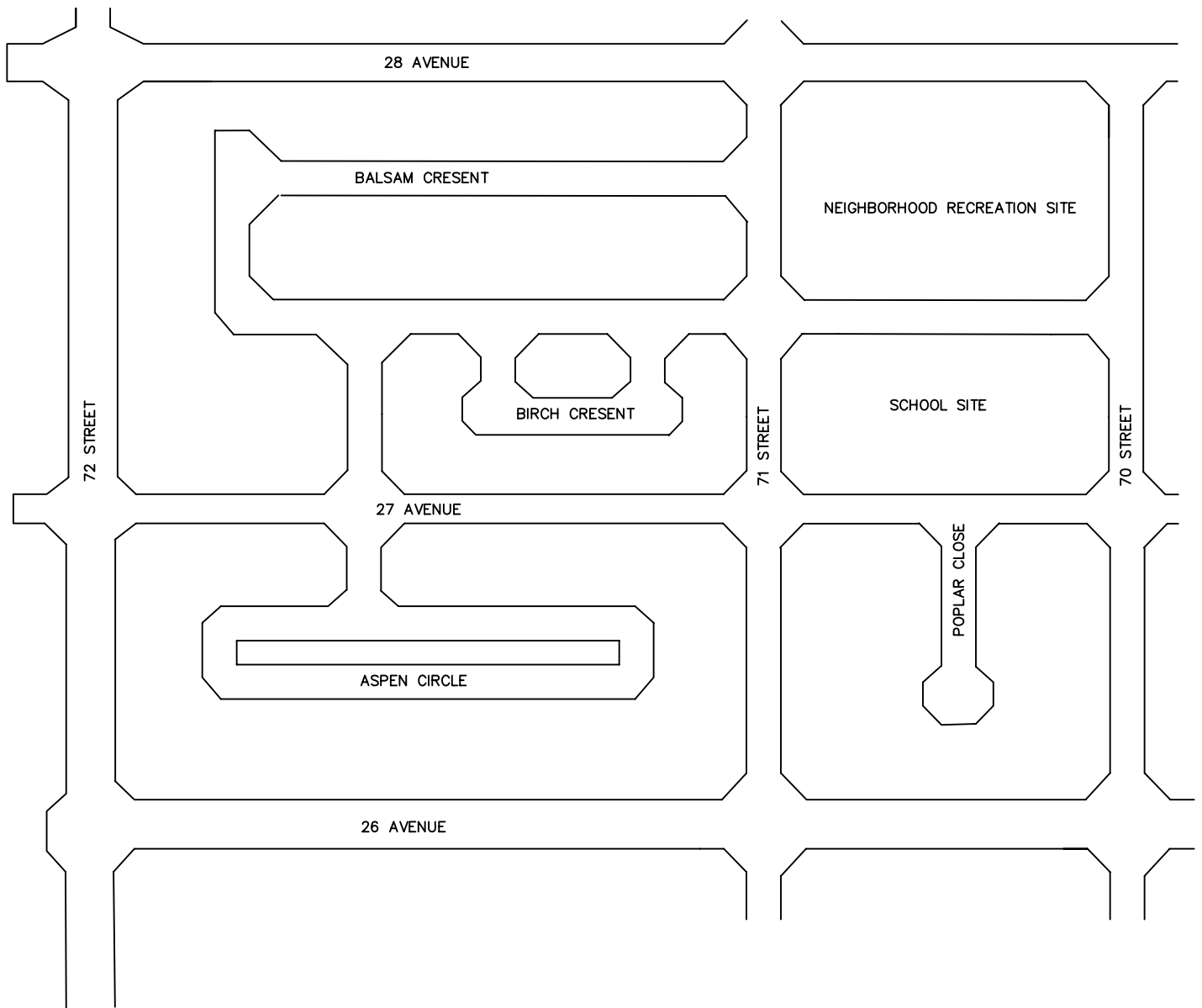
			CITY OF COLD LAKE PUBLIC WORKS AND INFRASTRUCTURE DEPARTMENT		
			DATE:	ACAD - CIVIL DRAFTING STANDARD DETAILS	APPROVED BY:
			JULY 2017		
			SCALE:	EMBANKMENT COMPACTION NEW ROADS GREATER THAN 1m FILL	DRAWING NO.
			N.T.S.		5.19
1	NOV 17, 2017	DRAWING NUMBER			
NO.	DATE	REVISION			



ROADWAY EMBANKMENT COMPACTION— EXISTING ROAD  
N.T.S

			CITY OF COLD LAKE PUBLIC WORKS AND INFRASTRUCTURE DEPARTMENT		
			DATE:	ACAD - CIVIL DRAFTING STANDARD DETAILS	APPROVED BY:
			JULY 2017		
			SCALE:	EMBANKMENT COMPACTION NEW EXISTING ROADS	DRAWING NO.
			N.T.S.		5.20
1	NOV 17, 2017	DRAWING NUMBER			
NO.	DATE	REVISION			





NOTE:

BACKGROUND OF SIGN TO BE PAINTED BEIGE

ROAD AREAS AND FEATURE NAMES TO BE PAINTED BROWN

			CITY OF COLD LAKE		
			PUBLIC WORKS AND INFRASTRUCTURE DEPARTMENT		
			DATE:	ACAD - CIVIL DRAFTING STANDARD DETAILS	APPROVED BY:
			JULY 2006		
			SCALE:	SAMPLE SUBDIVISION MAP SIGN	DRAWING NO.
			N.T.S.		
1	JAN 31, 2007	DRAWING NUMBER			6.01
NO.	DATE	REVISION			

## SUBDIVISION NAME

DEVELOPERS CORPORATE NAME  
TELEPHONE NUMBER  
SUBDIVISION SERVICING AND LOT SALES  
INFORMATION

CITY OF COLD LAKE FACILITIES AND PUBLIC  
WORKS DEPARTMENT  
639-3776  
FACILITIES, UTILITIES ROADWAY MAINTENANCE

CITY OF COLD LAKE INFRASTRUCTURE SERVICES  
594 4494  
INFRASTRUCTURE, ROADWAYS

NORTHERN LIGHTS SCHOOL DIVISION  
594-6838  
INFORMATION REGARDING SCHOOLS

## GENERAL INFORMATION SIGN

## SUBDIVISION NAME

IN ACCORDANCE WITH THE APPROVED AREA  
STRUCTURE PLAN, THIS SITE IS PROPOSED  
TO BE THE SITE OF A PUBLIC ELEMENTARY  
OF CATHOLIC ELEMENTARY SCHOOL

FOR MORE INFORMATION , PLEASE CONTACT  
THE NORTHERN LIGHTS SCHOOL DIVISION AT  
594 6838

## FUTURE SCHOOL SITE SIGN

## SUBDIVISION NAME

IN ACCORDANCE WITH  
THE APPROVED OUTLINE  
PLAN THIS SITE IS  
PROPOSED TO BE A  
NEIGHBORHOOD  
RECREATION PARK.

FOR ADDITIONAL  
INFORMATION PLEASE  
CONTACT THE PLANNING  
AND DEVELOPMENT  
DEPARTMENT AT  
594-4494

## NEIGHBORHOOD RECREATION SIGN

## DETENTION POND

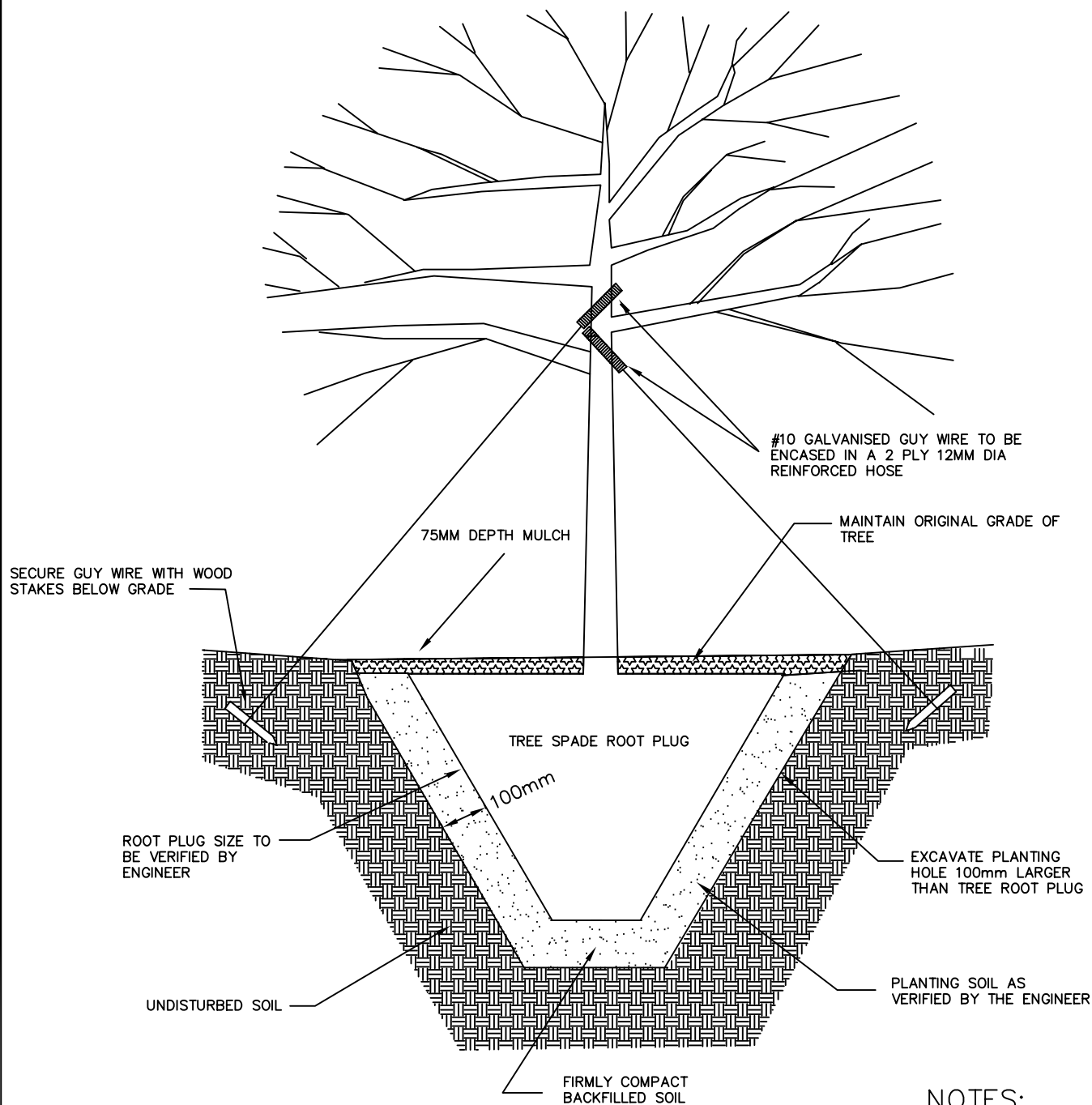
THIS AREA CONTAINS A STORM  
WATER DETENTION POND.DURING  
HEAVY RAINFALLS, STORMWATER  
FLOWS INTO THIS FACILITY THEN  
DRAINS AS RAINFALL DECREASES.

PLEASE KEEP CLEAR OF THIS  
AREA DURING RAINFALLS AS WATER  
LEVELS MAY INCREASE RAPIDLY

FOR FURTHER INFORMATION  
CONTACT;  
THE CITY OF COLD LAKE PUBLIC  
WORKS DEPARTMENT AT 639-3776

## STORM DETENTION POND WARNING SIGN

			CITY OF COLD LAKE PUBLIC WORKS AND INFRASTRUCTURE DEPARTMENT		
			DATE:	ACAD - CIVIL DRAFTING STANDARD DETAILS	APPROVED BY:
			JULY 2006		
			SCALE:	SAMPLE INFORMATION SIGN	DRAWING NO. 6.02
2	MAY 9, 2016	TITLE CHANGE	N.T.S.		
1	JAN 31, 2007	DRAWING NUMBER			
NO.	DATE	REVISION			

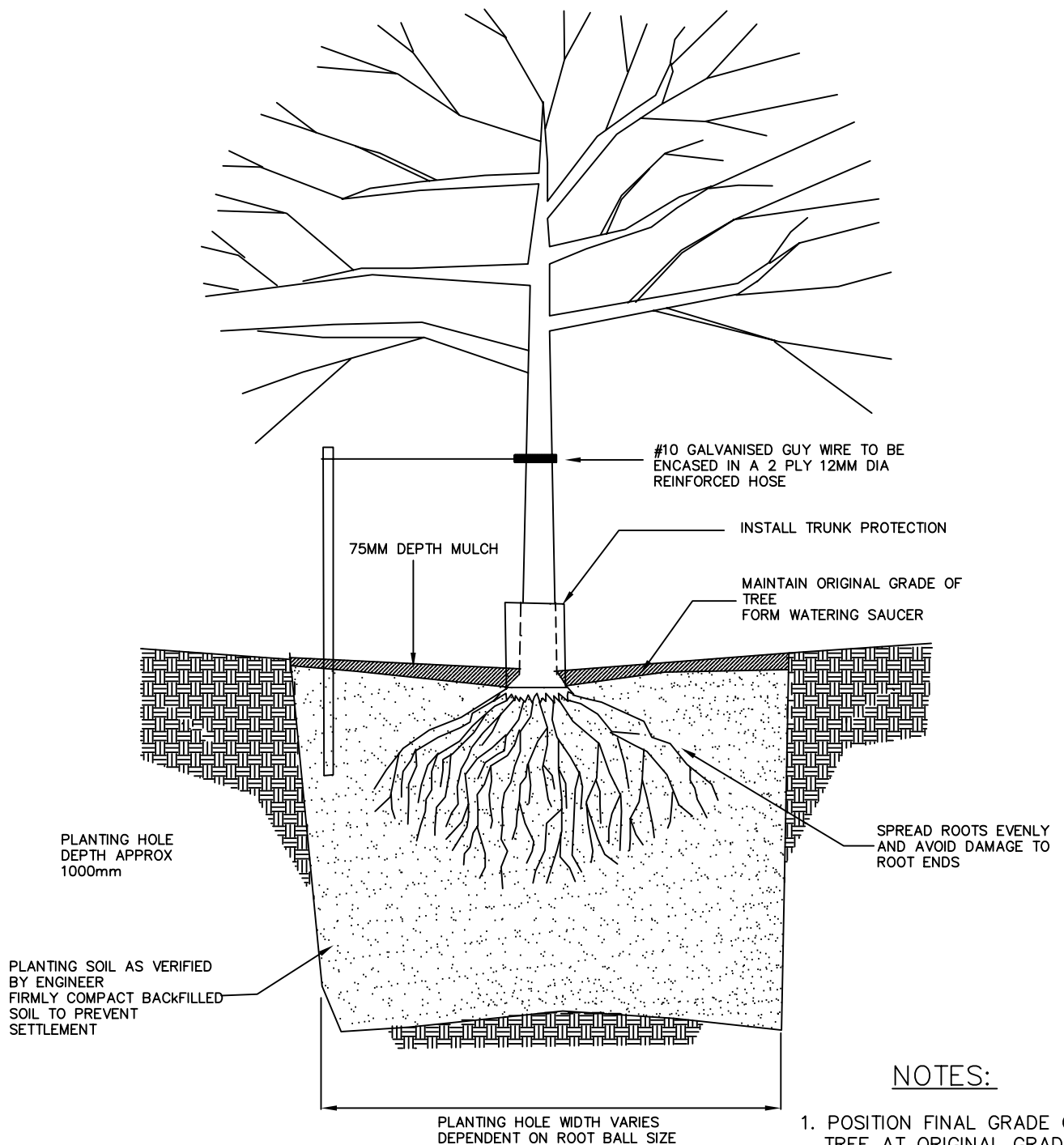


## NOTES:

1. POSITION FINAL GRADE OF TREE AT ORIGINAL GRADE
2. PRUNE BROKEN AND DISEASED BRANCHES
3. WATER THOROUGHLY AFTER PLANTING
4. THIS DETAIL APPLIES TO DECIDUOUS AND CONIFEROUS TREES

## SECTION

			CITY OF COLD LAKE		
			PUBLIC WORKS AND INFRASTRUCTURE DEPARTMENT		
			DATE:	ACAD - CIVIL DRAFTING STANDARD DETAILS	APPROVED BY:
			JAN. 2003		
			SCALE:		
			N.T.S.	TREE SPADE DETAIL	DRAWING NO.
1	JAN 31, 2007	DRAWING NUMBER			
NO.	DATE	REVISION			
					7.01

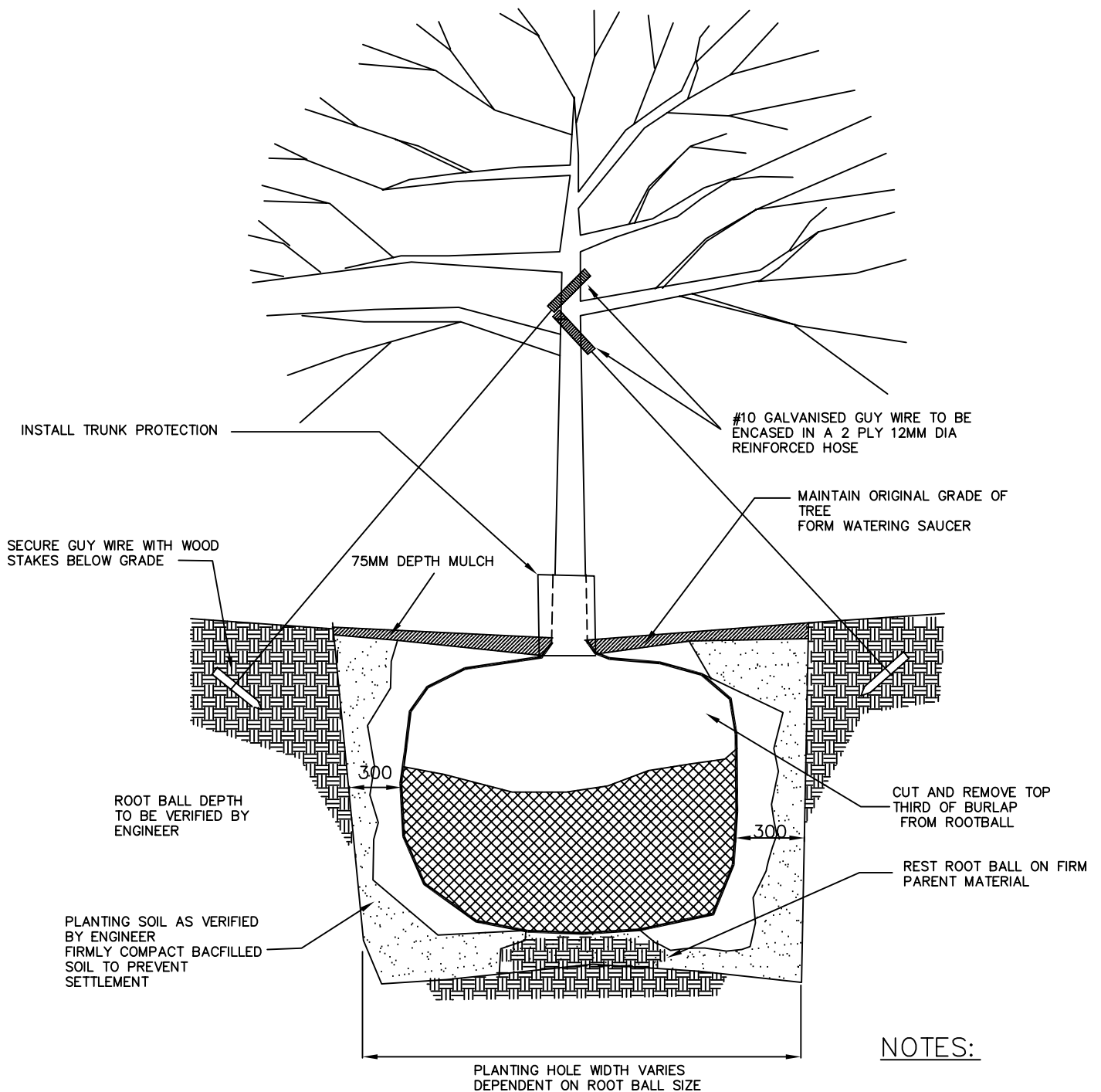


## SECTION

### NOTES:

1. POSITION FINAL GRADE OF TREE AT ORIGINAL GRADE
2. PRUNE BROKEN AND DISEASED BRANCHES
3. WATER THOROUGHLY AFTER PLANTING
4. THIS DETAIL APPLIES TO DECIDUOUS AND CONIFEROUS TREES
5. USE FOR TREES 25–38mm CALIPER

			CITY OF COLD LAKE		
			PUBLIC WORKS AND INFRASTRUCTURE DEPARTMENT		
			DATE:	ACAD - CIVIL DRAFTING STANDARD DETAILS	APPROVED BY:
			JAN. 2003		
			SCALE:	BARE ROOT TREE DETAIL	DRAWING NO.  7.02
			N.T.S.		
1	JAN 31, 2007	DRAWING NUMBER			
NO.	DATE	REVISION			



## SECTION

1. POSITION FINAL GRADE OF TREE AT ORIGINAL GRADE
2. PRUNE BROKEN AND DISEASED BRANCHES
3. WATER THOROUGHLY AFTER PLANTING
4. THIS DETAIL APPLIES TO DECIDUOUS AND CONIFEROUS TREES

			CITY OF COLD LAKE		
			PUBLIC WORKS AND INFRASTRUCTURE DEPARTMENT		
			DATE:	ACAD - CIVIL DRAFTING	APPROVED BY:
			JAN. 2003	STANDARD DETAILS	
			SCALE:		DRAWING NO.
			N.T.S.	ROOT BALLED TREE	7.03
1	JAN 31, 2007	DRAWING NUMBER		PLANTING DETAIL	
NO.	DATE	REVISION			